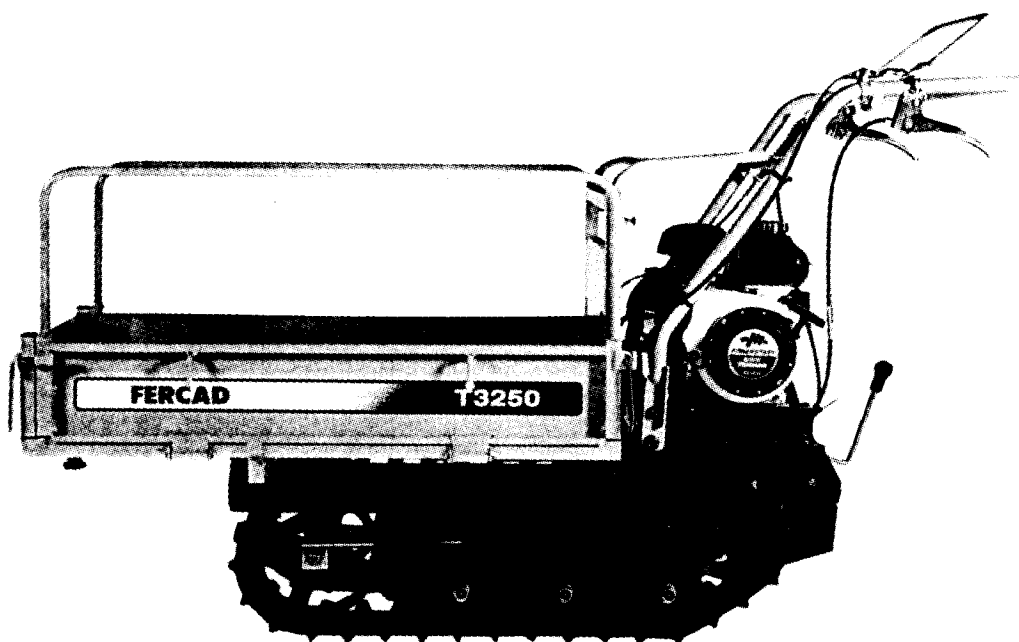


YANMAR GASOLINE CARRIER

YANMAR

PARTS CATALOG



MODEL

T3250

Published

JAN., 1999

NPC-3659

YOUR PARTS ORDERING

- When placing your parts order with us, Please contact us upon confirming the Model, Part No, Description and Q'ty of the parts you want to order by this parts catalog.
First look for the illustration of the part you want. Then you can find out the necessary informations by tracing the illustration No., as each illustration corresponds to the parts list on the following page.
- All parts the illustrations of which are not numbered shall not be sold separately.
- You are asked to prepare parts, especially consumable parts in the demand season earlier, as orders will come with a rush in this season.
- Parts other than those due to misshipping on your part shall not be allowed to returned in principle.
- Please surely use **YANMAR** Genuine Parts in any **YANMAR** Product.
(Use of similar goods (parts) on the market causes earlier damage or worsening of performance.)

HOW TO READ THIS PARTS CATALOG

- In the case where a Ref. No. given in the list does not agree with the corresponding Sketch No. in illustration (no suffix number as shown below), an illustration for such a New Part has been omitted only in the case of a parts change for which Interchangeability Symbol N, R or K is given.
[Example]

Sketch No. in Illustration	Ref. No. in List	
1	1	(Before the change)
2	1	(After the change)
2	2	
- Indication and meaning of level
Level
.....A number of dots indicated is called the level which refers to the assembly-component relation of an assembly part.
("·" refers to an assembly part.)
·.....Refers to a component included in an assembly part indicated by one dot (·).
··.....Refers to a component included in a complete part indicated by two dots (··).
(It indicates a sub-component of pertinent assembly part indicated by one dot (·).)
- Indication and meaning of interchangeability symbol
(Given under the column "I" next to the quantity column in the list)
In the case where a parts change took place, one of the following interchangeability symbols is indicated for that part:

Symbol	Interchangeability	Contents note
N	New Old	New Part is interchangeable for Old Part but not interchangeable conversely.
P	New Old	Same as symbol N but supply of Old Part is suspended and New Part is sold in the future.
Q	New Old	New Part is not interchangeable for Old Part but interchangeable conversely.
R	New Old	New Part is interchangeable for Old Part and vice versa.
S	New Old	New Part is not interchangeable for Old Part and vice versa.
W		Part newly added.
Z		Part discontinued.
F		Not interchangeable by single part but interchangeable by set of the related parts.
K		Changed only in quantity used.

- Remarks (column "R" given at the right end of the list)
9-1) A numerical or alphabetic character (symbol) may be indicated under the column "R".
9-2) A comment (remarks) for a part in question is given at the lower part of the list, following a symbol identical to the aforementioned symbol when a symbol is indicated under the column "R".
- Virtual No. in illustration
A Sketch No. in illustration containing an encircled numeral indicates other related Group No.
[Example]

③ - 1	Group No. 3	indicated.
	Ref. No. 1	

- Change Effective Machine No.
When a part is changed, a Change Effective Machine No. of such a model for which a New Part is applied is indicated as follows:
[Example] Model columns A ~ F
(Model indication is given in two kinds, namely, 4-model and 6-model indications.)
correspond to A ~ F in front of Change Effective Machine No..

4-model Indication

(A) =
(B) =
(C) =
(D) =

6-model Indication

(A) =	(D) =
(B) =	(E) =
(C) =	(F) =

[Example] A=F610001 B=F612001

Model column A indicates that a parts change is put into effect from Machine No. 610001 and on. And moreover Model column B indicates that a parts change is put into effect from Machine No. 612001 and on.

[Classification]

E	Engine No.	indicated.
F	Machine Body No.	
R	Rotary Unit No.	

- Additional Group No. found in the Revised Edition
Kindly understand that a Group No. other than consecutive numbers has been entered in the case where the corresponding Group is added within the pertinent Section.

[Example]

Section

BODY SECTION

Group No.

Group name

- 46. ENGINE FIXTURE & BATTERY
- 47. FRAME & HYDRAULIC PUMP
- 48. BEVEL GEAR CASE
- 49. TRANSM. CASE & RUNNING CLUTCH
- 50. CONTROL LEVERS
- 51. CRAWLER
- 64. ENGINE FIXTURE & BATTERY (Group added for the YSR1300-N)
- 65. CONTROL LEVERS (Group added for the YSR1300-N)

SNOW REMOVAL SECTION

- 52. CHUTE
- 53. SNOW REMOVAL FRAME & BLOWER

Additional Groups are indicated.

Owing to the improvement of **YANMAR** Product involved or its parts, the contents of this Parts Catalog may be altered without prior notice to you.

ESPECIFICACIONES

Modelo		T3250
Motore	Modelo	GA90SCSA
	tipo	OHV (4 tempi benzina)
	potenza	3.0/4000
	avviamento	a fune autoavvolgente
Dimensioni	lunghezza mm	1610
	larghezza mm	680
	altezza mm	1015
Peso	Kg.	150
Piattaf. carico dimensioni	lunghezza mm	920/1120
	larghezza mm	615/1050
	altezza	150
Portata max	Kg.	(250) 300
Sollev. pianale	Kg.	manuale
Trasmissione	n.marce.	2 avani + 1 retro
	frizione	a tensione a cinghia
	freno	ad espansione interna
Carro cingolato	appoggio mm	580
	larghezza mm	180
	interasse	440
Tendingolo		a molla
Velocità	1A	1,7
	2A	3,6
	1R	2,1
	2R	-

CONTENTS

YOUR PARTS ORDERING SPECIFICATIONS

ENGINE UNIT(GA90E-SCSA)

GROUP NO. GROUP NAME

1. CYLINDER BLOCK
2. CYLINDER HEAD & BONNET
3. TOOL & LABEL
4. AIR CLEANER & MUFFLER
5. CRANKSHAFT, PISTON & CAMSHAFT
6. FUEL OIL TANK & FUEL OIL LINE
7. CARBURETOR
8. GOVERNOR & CONTROL DEVICE
9. FLY. MAGNET & STARTING DEVICE

BODY SECTION

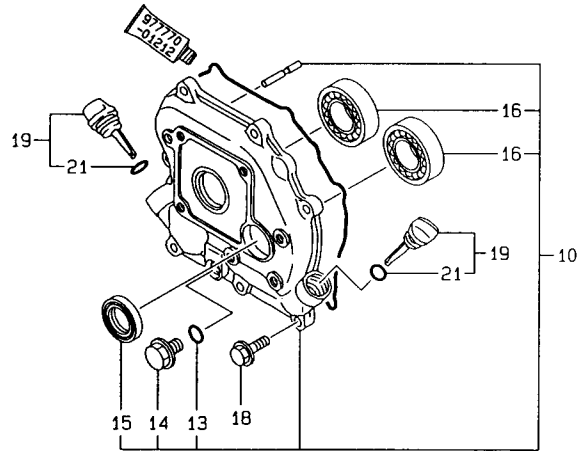
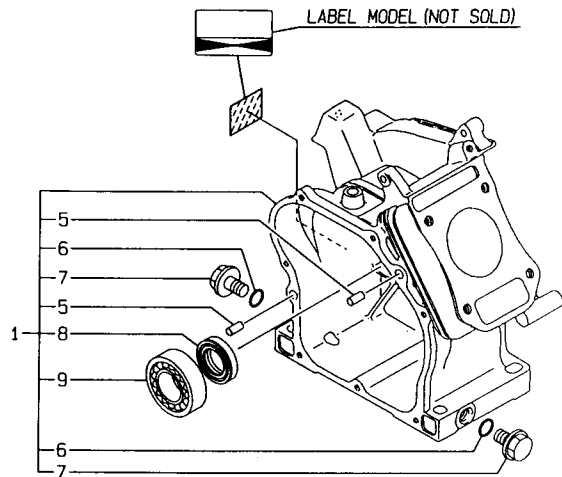
10. FRAME
11. CONTROL SECTION
12. PLATFORM CARRIER

TRANSMISSION UNIT

13. TRANSMISSION

PARTS INDEX

1. CYLINDER BLOCK



N132435

-----+
 | (REMARKS) "EFFECTIVE MACHINE NO." OF
 | ENGINE IS INDICATED ON THE
 | ENGINE LABEL WHICH IS SHOWN
IN FIG.1.

-----+
 | 1803 |
 | (1802) |
 -----+
 NPC-3659

1. CYLINDER BLOCK

98.12.11

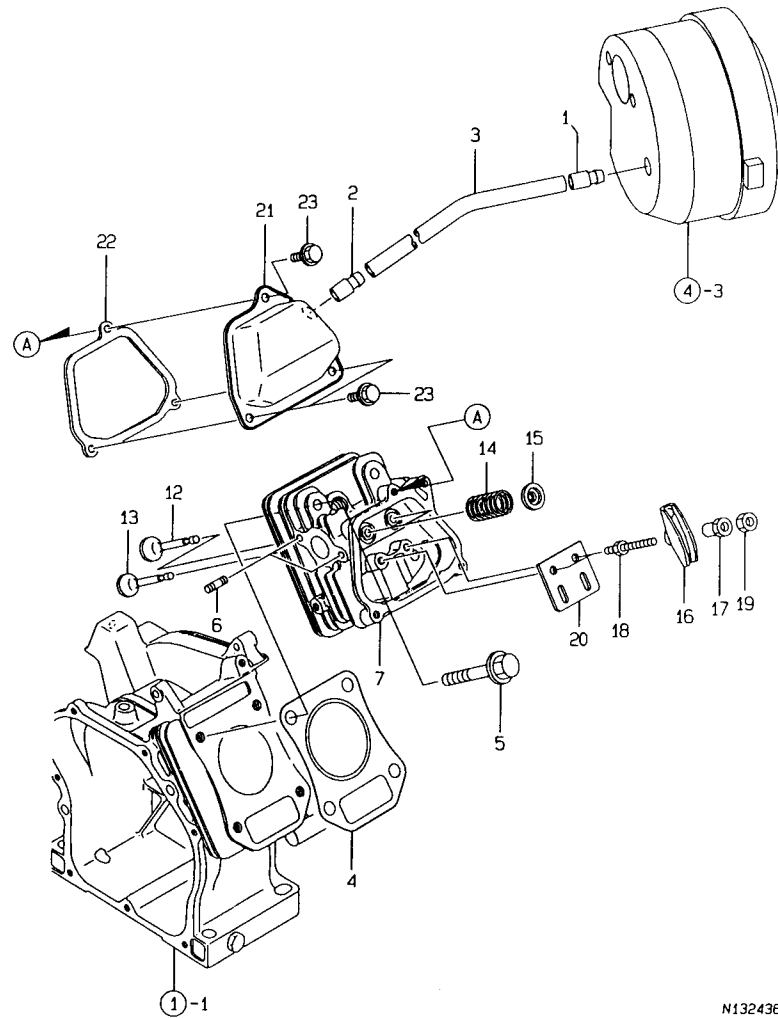
(A)=GA90E-SCSA (D)=
 (B)= (E)=
 (C)= (F)=

REF. NO.	LEV. 0	PART NO.	DESCRIPTION	-----Q'TY-----						I	P	U	A	R
				(A)	(B)	(C)	(D)	(E)	(F)					
1	.	760490-01562	BLOCK ASSY, CYLINDER	1										1
5	..	114270-01600	PARALLEL PIN 8X12	2										1
6	..	24311-000100	O-RING 1A P-10.0	2										10
7	..	26106-100162	BOLT M10X 16 PLATED	2										10
8	..	160510-02220	SEAL, OIL	1										1
9	..	24101-062030	BALL BEARING	1										1
10	.	760490-01500	COVER, CRANKCASE	1										1
13	..	24311-000100	O-RING 1A P-10.0	1										10
14	..	26106-100162	BOLT M10X 16 PLATED	1										10
15	..	160510-02220	SEAL, OIL	1										1
16	..	24101-062030	BALL BEARING	2										1
18	.	26476-060202	BOLT M 6X 20, TAPPING	7										10
19	.	160611-01740	CAP ASSY	2										1
21	..	24311-000150	O-RING 1A P-15.0	2										10

----- REMARKS -----
 | (REMARKS) "EFFECTIVE MACHINE NO." OF
 | ENGINE IS INDICATED ON THE
 | ENGINE LABEL WHICH IS SHOWN
IN FIG.1.

N132435

2. CYLINDER HEAD & BONNET



N132436

 (REMARKS) "EFFECTIVE MACHINE NO." OF
 ENGINE IS INDICATED ON THE
 ENGINE LABEL WHICH IS SHOWN
 IN FIG.1.

-----+
 1B04
 (1B02)
 -----+
 NPC-3659

2. CYLINDER HEAD & BONNET

98.12.11

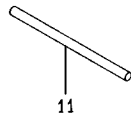
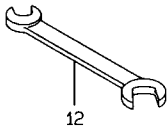
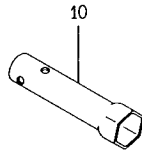
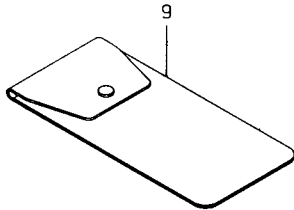
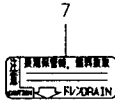
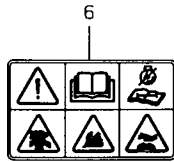
(A)=GA90E-SCSA (D)=
 (B)= (E)=
 (C)= (F)=

REF. NO.	LEV. 0	PART NO.	DESCRIPTION	-----Q'TY-----						I P/U A R
				(A)	(B)	(C)	(D)	(E)	(F)	
1	.	160520-03050	BREATHER.MT.	1						1
2	.	160610-03050	BREATHER ASSY	1						1
3	.	160510-03180	PIPE, BREATHER	1						1
4	.	160498-01330	GASKET, CYL. HEAD	1						1
5	.	160610-04201	BOLT M 8X 53	4						1
6	.	160610-04620	BOLT M6X 16	2						1
7	.	160490-11010	HEAD ASSY, CYLINDER	1						1
12	.	160664-11100	INLET VALVE	1						1
13	.	160664-11110	EXHAUST VALVE	1						1
14	.	160490-11120	SPRING, VALVE	2						1
15	.	160664-11180	RETAINER, VALVE	2						1
16	.	160699-11200	ARM, VALVE ROCKER	2						1
17	.	160690-11221	PIVOT, ROCKER ARM	2						1
18	.	160690-11271	BOLT	2						1
19	.	160690-11280	NUT M6X 0.5	2						1
20	.	160490-11290	GUIDE PLATE	1						1
21	.	160490-11300	BONNET	1						1
22	.	160490-11310	GASKET, BONNET	1						1
23	.	26476-060142	BOLT M 6X 14, TAPPING	3						10

----- REMARKS -----
 (REMARKS) "EFFECTIVE MACHINE NO." OF
 ENGINE IS INDICATED ON THE
 ENGINE LABEL WHICH IS SHOWN
 IN FIG.1.

N132436

3. TOOL & LABEL



1805
1802
NPC-3659

3. TOOL & LABEL

98.12.11

(A)=GA90E-SCSA (D)=
(B)= (E)=
(C)= (F)=

REF. NO.	LEV. 0	PART NO.	DESCRIPTION	Q'TY						
				(A)	(B)	(C)	(D)	(E)	(F)	
6	.	160991-07260	LABEL	1						1
7	.	160520-07272	LABEL, DRAIN	1						1
8	.	160664-07370	LABEL, AIR CLEANER	1						1
9	.	160110-92610	BAG, TOOL	1						1
10	.	160120-92700	SPANNER, BOX	1						1
11	.	160110-92710	BAR	1						1
12	.	28110-100120	WRENCH 10X12	1						1

N132437

(REMARKS) "EFFECTIVE MACHINE NO." OF
ENGINE IS INDICATED ON THE
ENGINE LABEL WHICH IS SHOWN
IN FIG.1.

REMARKS (REMARKS) "EFFECTIVE MACHINE NO." OF
ENGINE IS INDICATED ON THE
ENGINE LABEL WHICH IS SHOWN
IN FIG.1.

N132437

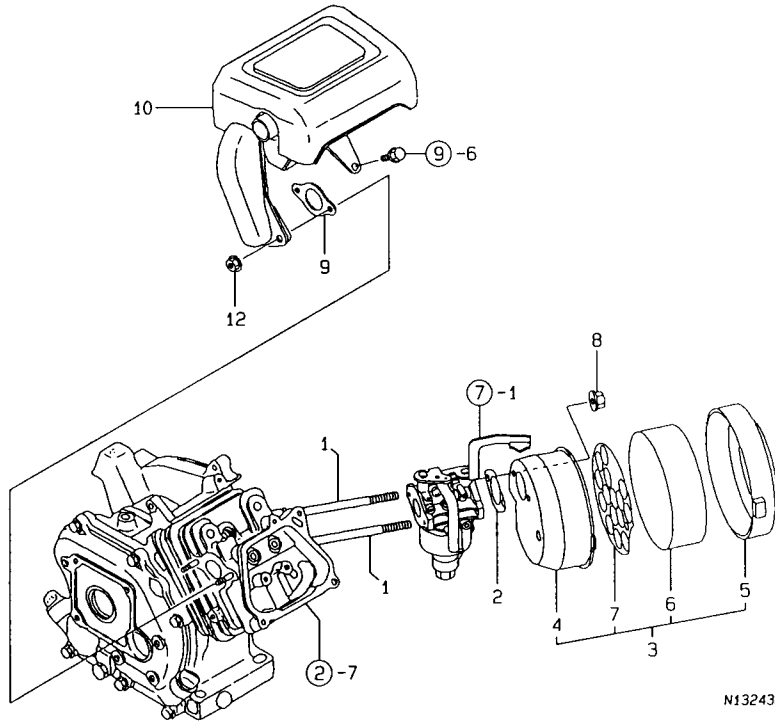
4. AIR CLEANER & MUFFLER

+-----+
| 1806 |
| (1802) |
+-----+
NPC-3659

4. AIR CLEANER & MUFFLER

98.12.11

(A)=GA90E-SCSA (D)=
(B)= (E)=
(C)= (F)=



N132438

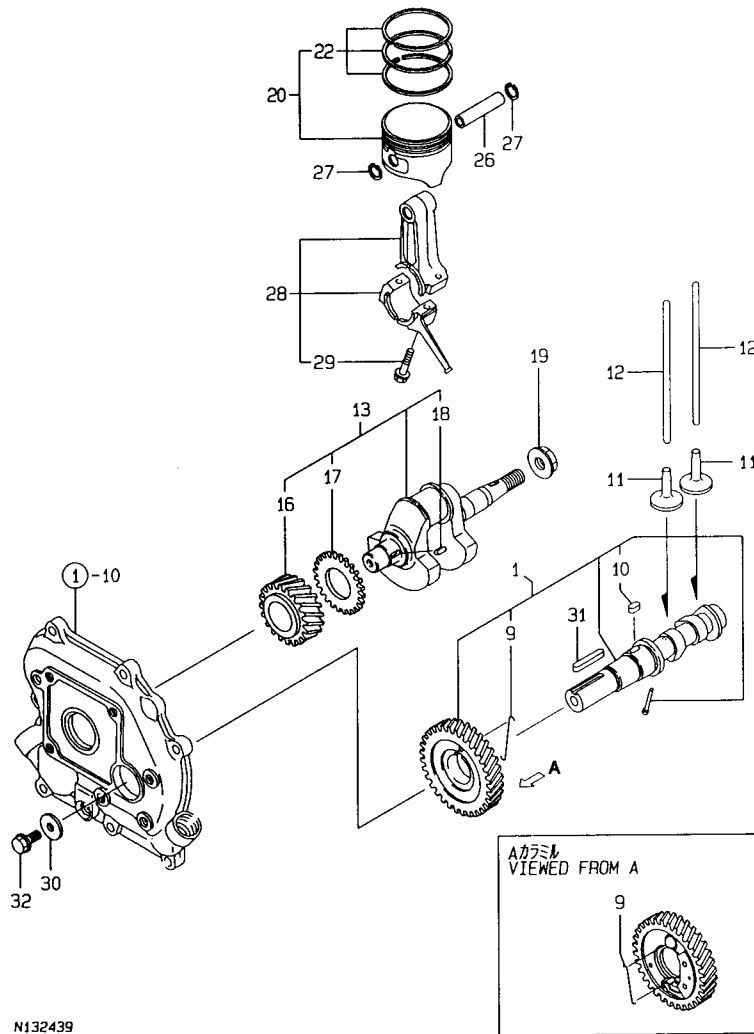
REF. NO.	LEV. 0	PART NO.	DESCRIPTION	-----Q'TY-----						I	P/U	A	R
				(A)	(B)	(C)	(D)	(E)	(F)				
1	.	160610-04570	BOLT M 6X 70	2									1
2	.	160762-12050	GASKET, IN. MANIFOLD	2									1
3	.	160490-12500	CLEANER ASSY, AIR	1									1
4	..	160490-12520	BODY, AIR CLEANER	1									1
5	..	160610-12530	CAP, AIR CLEANER	1									1
6	..	160610-12540	ELEMENT, AIR CLEANER	1									1
7	..	160610-12550	HOLDER, ELEMENT	1									1
8	.	26366-060002	NUT M 6	2									10
9	.	160510-13200	GASKET, MUFFLER	1									1
10	.	160498-13550	MUFFLER ASSY	1									1
12	.	26366-060002	NUT M 6	2									10

| (REMARKS) "EFFECTIVE MACHINE NO." OF
| ENGINE IS INDICATED ON THE
| ENGINE LABEL WHICH IS SHOWN
| IN FIG.1.
|

----- REMARKS -----
| (REMARKS) "EFFECTIVE MACHINE NO." OF
| ENGINE IS INDICATED ON THE
| ENGINE LABEL WHICH IS SHOWN
| IN FIG.1.
|

N132438

5. CRANKSHAFT, PISTON & CAMSHAFT



N132439

(REMARKS) "EFFECTIVE MACHINE NO." OF

ENGINE IS INDICATED ON THE
ENGINE LABEL WHICH IS SHOWN
IN FIG.1.

+-----+
| 1B07 |
| (1B02) |
+-----+
NPC-3659

5. CRANKSHAFT, PISTON & CAMSHAFT

98.12.11

(A)=GA90E-SCSA (D)=
(B)= (E)=
(C)= (F)=

REF. NO.	LEV. 0	PART NO.	DESCRIPTION	Q'TY						I	P	U	A	R
				(A)	(B)	(C)	(D)	(E)	(F)					
1	.	160498-14050	CAMSHAFT ASSY	1										1
9	..	160611-14560	SPRING	1										1
10	..	114250-21290	KEY 4X 7	1										1
11	.	160490-14200	TAPPET	2										1
12	.	160490-14400	ROD, PUSH	2										1
13	.	760490-21700	CRANKSHAFT ASSY	1										1
16	..	160530-21200	GEAR, CRANKSHAFT	1										1
17	..	160590-21210	GEAR, IDLE	1										1
18	..	160610-21290	KEY 4X 10	1										1
19	.	26376-120002	U-NUT M12	1									10	
20	.	160490-22010	PISTON ASSY	1										1
22	..	760490-22500	RING SET, PISTON	1										1
26	.	160490-22300	PIN, PISTON	1										1
27	.	22252-000120	CIRCLIP 12	2										1
28	.	160490-23030	ROD ASSY, CONNECTING	1										1
29	..	26106-060302	BOLT M 6X 30 PLATED	2										10
30	.	160510-14550	WASHER	1										1
31	.	160810-21290	KEY 4X24	1										1
32	.	26106-060162	BOLT M 6X 16 PLATED	1										10

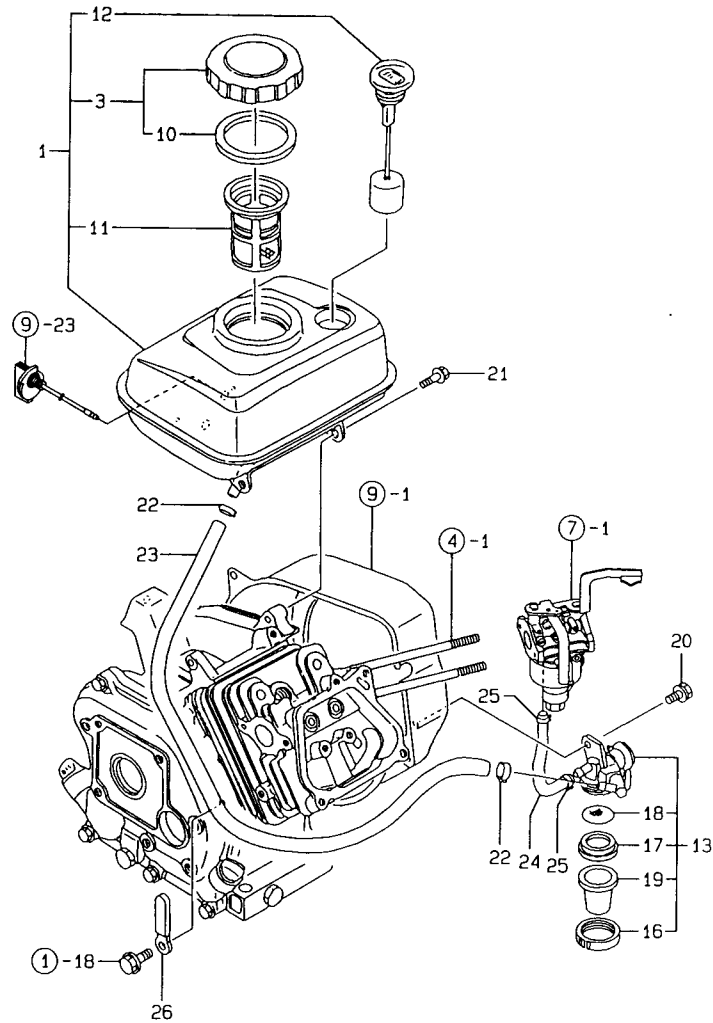
REMARKS

(REMARKS) "EFFECTIVE MACHINE NO." OF

ENGINE IS INDICATED ON THE
ENGINE LABEL WHICH IS SHOWN
IN FIG.1.

N132439

6. FUEL OIL TANK & FUEL OIL LINE



N132440

(REMARKS) "EFFECTIVE MACHINE NO." OF

ENGINE IS INDICATED ON THE
ENGINE LABEL WHICH IS SHOWN
IN FIG.1.

6. FUEL OIL TANK & FUEL OIL LINE

98.12.11

1808
(1802)
NPC-3659

(A)=GA9DE-SCSA (D)=
(B)= (E)=
(C)= (F)=

REF. NO.	LEV. 0	PART NO.	DESCRIPTION	Q'TY						I P/U A R
				(A)	(B)	(C)	(D)	(E)	(F)	
1	.	760493-55700	TANK, FUEL (RED) (50)	1						1
3	..	160710-55061	CAP ASSY, FUEL TANK	1						1
10	...	160393-55050	GASKET, TANK CAP	1						1
11	..	160610-55100	STRAINER	1						1
12	..	160708-55150	GAUGE, FUEL	1						1
13	.	160692-55300	COCK ASSY, FUEL	1						1
16	..	160710-55360	RING	1						1
17	..	160710-55370	GASKET	1						1
18	..	160710-55382	FILTER	1						1
19	..	160710-55390	BOWL, STRAINER	1						1
20	.	26106-060102	BOLT M 6X 10 PLATED	1						10
21	.	26476-060142	BOLT M 6X 14, TAPPING	3						10
22	.	106990-44660	BAND, HOSE	2						1
23	.	160490-59350	HOSE, FUEL (A-340)	1						1
24	.	160490-59360	HOSE, FUEL (B-145)	1						1
25	.	124060-77680	CLAMP 10	2						1
26	.	160260-78700	CLAMP, CORD	1						1

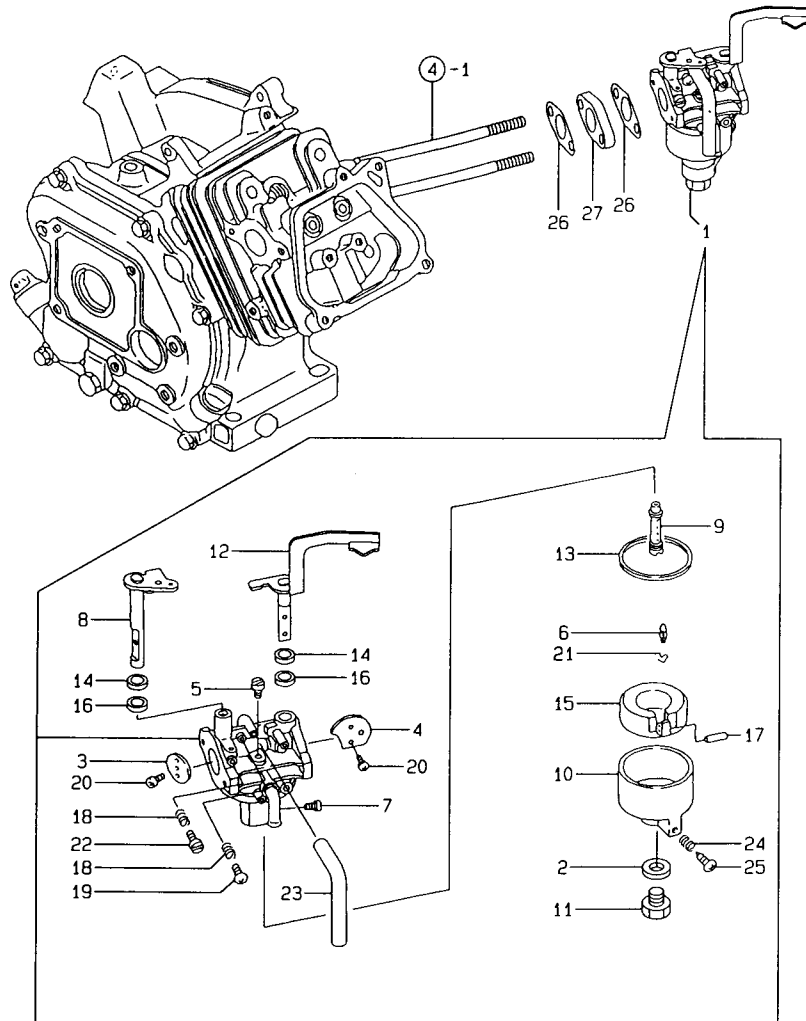
REMARKS

(REMARKS) "EFFECTIVE MACHINE NO." OF

ENGINE IS INDICATED ON THE
ENGINE LABEL WHICH IS SHOWN
IN FIG.1.

N132440

7. CARBURETOR



N132441

(REMARKS) "EFFECTIVE MACHINE NO." OF
ENGINE IS INDICATED ON THE
ENGINE LABEL WHICH IS SHOWN
IN FIG.1.

7. CARBURETOR

98.12.11

1809
1802
NPC-3659

(A)=GA90E-SCSA (D)=
(B)= (E)=
(C)= (F)=

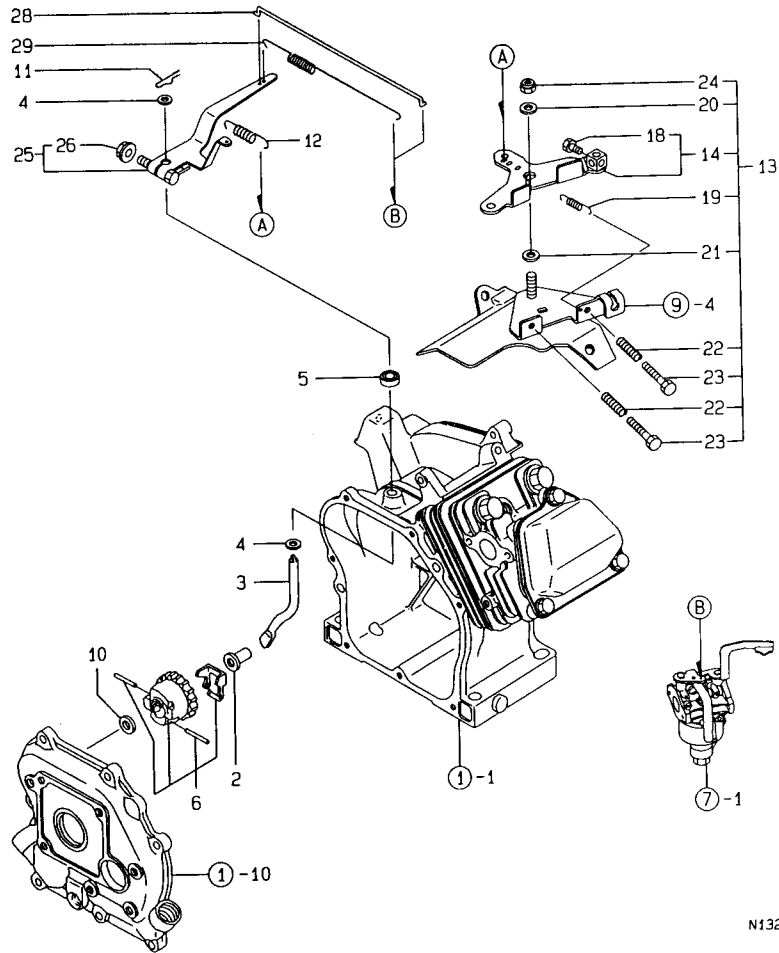
REF. NO.	LEV. 0	PART NO.	DESCRIPTION	Q-TY						I	P	U	A	R
				(A)	(B)	(C)	(D)	(E)	(F)					
1	.	160490-56011	CARBURETOR ASSY	1										1
2	..	160495-56600	GASKET	1										1
3	..	160492-56520	VALVE, THROTTLE	1										1
4	..	160492-56530	VALVE	1										1
5	..	160492-56540	JET, PILOT	1										1
6	..	160492-56550	NEEDLE	1										1
7	..	160495-56561	JET, MAIN	1										1
8	..	160492-56570	SHAFT ASSY, THROTTLE	1										1
9	..	160492-56581	NOZZLE, MAIN	1										1
10	..	160490-56590	BODY, FLOAT	1										1
11	..	160490-56600	BOLT	1										1
12	..	160492-56610	SHAFT, CHOKE	1										1
13	..	160510-56610	GASKET	1										1
14	..	160492-56620	GASKET	2										1
15	..	160510-56620	FLOAT ASSY	1										1
16	..	160492-56630	SEAL	2										1
17	..	160610-56630	PIN, FLOAT	1										1
18	..	181130-56640	SPRING	2										1
19	..	160692-56710	SCREW	1										1
20	..	160710-56710	SCREW	3										1
21	..	160769-56720	CLAMP	1										1
22	..	160667-56750	SCREW, ADJUSTING	1										1
23	..	160692-56770	HOSE	1										1
24	..	181230-56380	SPRING	1										1
25	..	160610-56900	SCREW	1										1
26	.	160667-56151	GASKET, CARBURETOR	2										1
27	.	160667-56160	SPACER, CARBURETOR	1										1

REMARKS

(REMARKS) "EFFECTIVE MACHINE NO." OF
ENGINE IS INDICATED ON THE
ENGINE LABEL WHICH IS SHOWN
IN FIG.1.

N132441

8. GOVERNOR & CONTROL DEVICE



1B10
1B02
NPC-3659

8. GOVERNOR & CONTROL DEVICE

98.12.11

(A)=GA90E-SCSA (D)=
(B)= (E)=
(C)= (F)=

REF. NO.	LEV. O	PART NO.	DESCRIPTION	QTY						I	P	U	A	R
				(A)	(B)	(C)	(D)	(E)	(F)					
2	.	160690-61301	SPINDLE, GOVERNOR	1										1
3	.	160690-61311	SHAFT, GOV. LEVER	1										1
4	.	160690-61450	WASHER	2										1
5	.	114770-61600	SEAL, OIL	1										1
6	.	160690-61600	GEAR ASSY, GOV.	1										1
10	.	160120-76940	WASHER	1										1
11	.	22372-080000	SNAP PIN (JASO 8)	1									10	
12	.	160490-66020	SPRING	1									1	
13	.	160492-66100	CONTROL ASSY	1									1	
14	..	160692-66051	LEVER ASSY, CONTROL	1									1	
18	...	26117-040088	BOLT M 4X 8 PLATED	1									10	
19	..	160664-66220	SPRING, RETURN	1									1	
20	..	160670-66350	COLLAR	1									1	
21	..	160120-76940	WASHER	1									1	
22	..	160520-66291	SPRING	2									1	
23	..	26117-040257	BOLT M 4X 25	2									10	
24	..	26347-060002	U-NUT M 6	1									1	
25	.	160490-66190	LEVER, GOVERNOR	1									1	
26	..	26366-060002	NUT M 6	1									10	
28	.	160490-66200	LINK, THROTTLE	1									1	
29	.	160490-66211	SPRING	1									1	

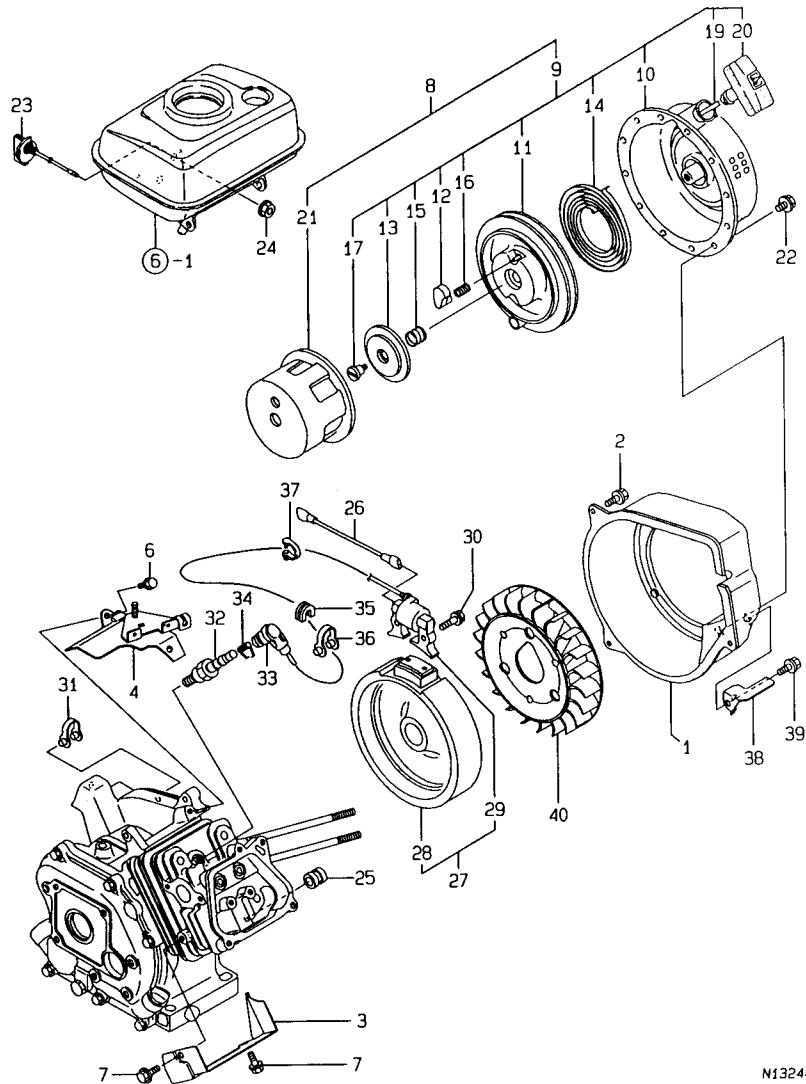
N132442

(REMARKS) "EFFECTIVE MACHINE NO." OF
ENGINE IS INDICATED ON THE
ENGINE LABEL WHICH IS SHOWN
IN FIG.1.

REMARKS (REMARKS) "EFFECTIVE MACHINE NO." OF
ENGINE IS INDICATED ON THE
ENGINE LABEL WHICH IS SHOWN
IN FIG.1.

N132442

9. FLY.MAGNET & STARTING DEVICE



N132443

(REMARKS) "EFFECTIVE MACHINE NO." OF

ENGINE IS INDICATED ON THE
ENGINE LABEL WHICH IS SHOWN
IN FIG.1.

9. FLY.MAGNET & STARTING DEVICE

98.12.11

1B11
(1B02)
NPC-3659

(A)=GA90E-SCSA (D)=
(B)= (E)=
(C)= (F)=

REF. NO.	LEV. 0	PART NO.	DESCRIPTION	Q'ITY						I	P	U	A	R
				(A)	(B)	(C)	(D)	(E)	(F)					
1	.	160490-45140	CASE, FAN (WHITE:14)	1										1
2	.	26476-060142	BOLT M 6X 14, TAPPING	3										10
3	.	160490-45230	COVER, CYLINDER	1										1
4	.	160490-45220	HEAD, CYLINDER	1										1
6	.	26476-060142	BOLT M 6X 14, TAPPING	2										10
7	.	26476-060142	BOLT M 6X 14, TAPPING	2										10
8	.	160490-76051	STARTER ASSY, RECOIL	1										1
9	..	160490-76251	RE-COIL STARTER	1										1
10	...	160490-76611	CASE ASSY, STARTER	1										1
11	...	160490-76511	REEL	1										1
12	...	160690-76801	RATCHET	2										1
13	...	160690-76531	GUIDE, RATCHET	1										1
14	...	160690-76540	SPRING, SPIRAL	1										1
15	...	160690-76561	SPRING, FRICTION	1										1
16	...	160690-76570	SPRING, RETURN	2										1
17	...	160698-76580	SETSCREW	1										1
19	...	160490-76580	ROPE, STARTER	1										1
20	...	160490-76600	KNOB, STARTER	1										1
21	..	160490-76591	PULLEY, STARTER	1										1
22	.	26106-060082	BOLT M 6X 8 PLATED	4										10
23	.	160611-77250	SWITCH, STOP	1										1
24	.	26366-080002	NUT M 8	1										10
25	.	160341-01950	PIPE	1										1
26	.	160490-78230	CORD, STOP	1										1
27	.	160490-78090	FLYWHEEL MAGNETO	1										1
28	..	160490-78540	ROTOR	1										1
29	..	160490-78550	COIL, LIGHTING	1										1
30	.	26476-060302	BOLT M 6X 30, TAPPING	2										10
31	.	29610-000650	CLAMP, SPEED 065	2										1
32	.	160793-78010	PLUG, SPARK	1										1
33	.	160700-78040	CAP, PLUG	1										1
34	.	160700-78050	TERMINAL, PLUG	1										1
35	.	160700-78720	GROMMET	1										1
36	.	29610-000950	CLAMP, SPEED 095	1										1
37	.	29610-001400	CLAMP	1										1
38	.	160490-45240	GUIDE, COOLING AIR	1										1
39	.	26476-060142	BOLT M 6X 14, TAPPING	1										10
40	.	160490-45010	FAN, COOLING	1										1

REMARKS

(REMARKS) "EFFECTIVE MACHINE NO." OF

ENGINE IS INDICATED ON THE
ENGINE LABEL WHICH IS SHOWN
IN FIG.1.

N132443

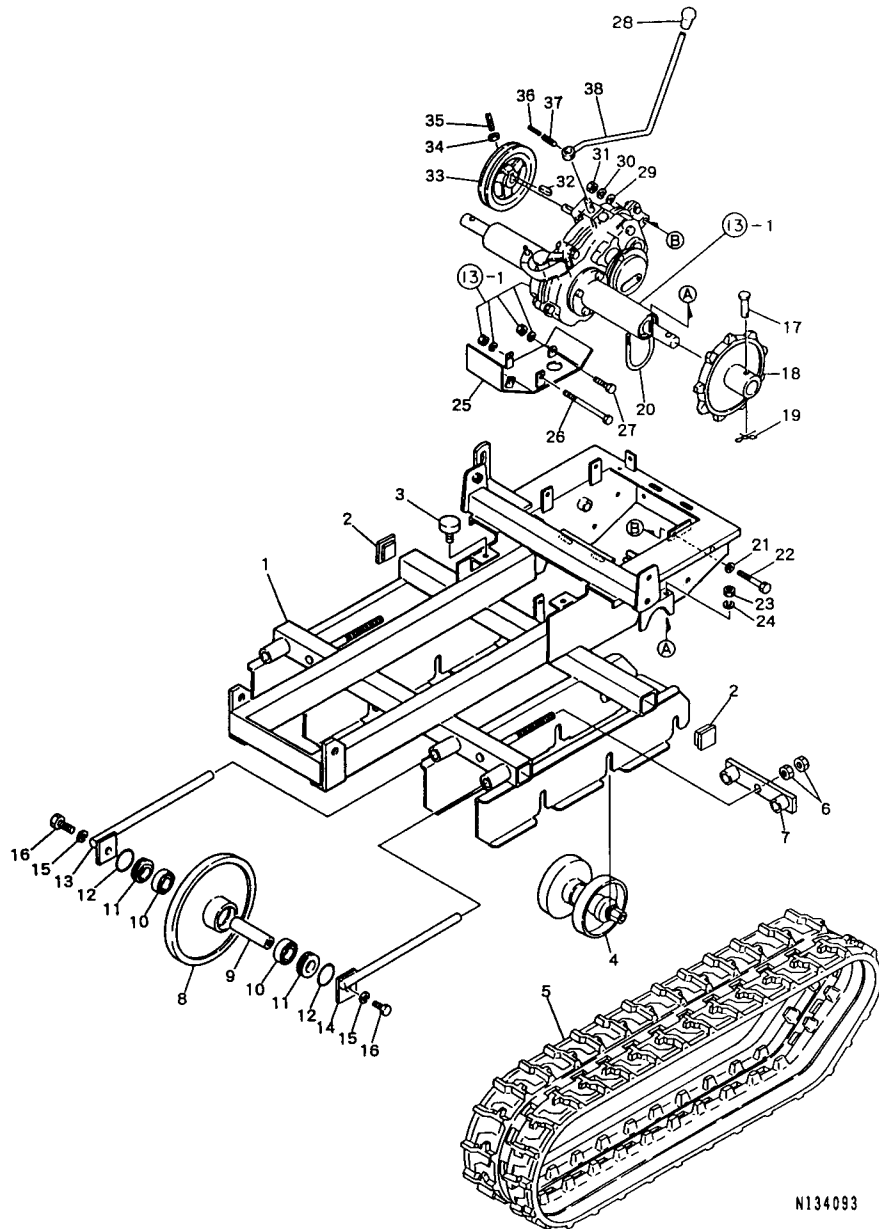
10. FRAME

1C03
1C02
NPC-3659

10. FRAME

98.12.11

(A)=T3250 (D)=
(B)= (E)=
(C)= (F)=

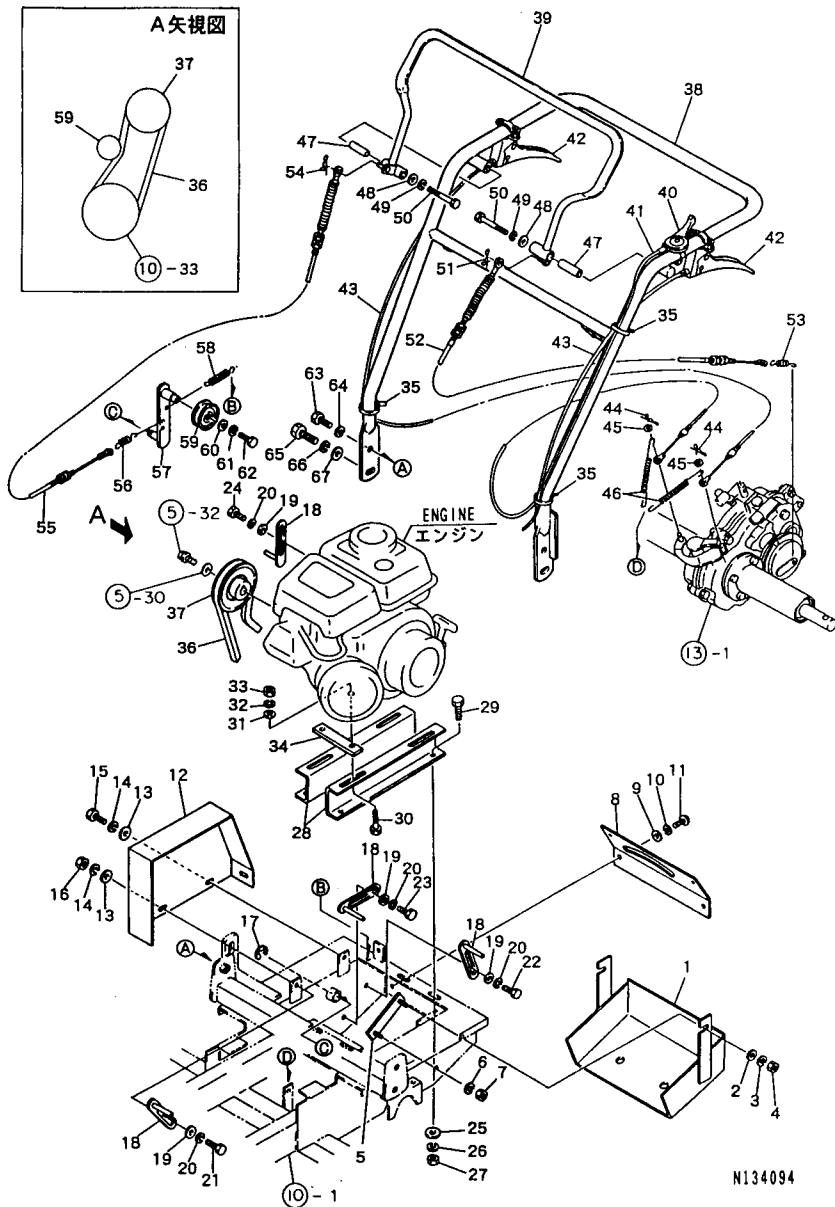


REF. NO.	LEV. 0	PART NO.	DESCRIPTION	Q'TY----- I P/U A R						
				(A)	(B)	(C)	(D)	(E)	(F)	
1	.	G41410020000	FRAME	1						
2	.	G46746230100	RUBBER CAP 40X40X3.5	4						
3	.	G46376512000	CUSHION RUBBER	2						
4	.	G40850160100	TRACK ROLLER ASSY	6						
5	.	G46496203000	RUBBER CRAWLER	2						
6	.	G40020100016	NUT M16	4						
7	.	G41400120200	TENSION PLATE	2						
8	.	G41410120000	FRONT IDLER	2						
9	.	G48501081000	SHAFT (FRONT IDLER)	2						
10	.	G4010146005A	BEARING 6005	4						
11	.	G46016511000	DUST COLLAR	4						
12	.	G40052300450	O-RING G-45	4						
13	.	G41500120000	TENSION ROD (R)	2						
14	.	G41500120100	TENSION ROD (L)	2						
15	.	G40027100012	SPRING WASHER M12	4						
16	.	G40010111225	BOLT M12X25	4						
17	.	G40031311055	PIN 10X60	2						
18	.	G41410120100	SPROCKET	2						
19	.	G40031199010	STOPPER PIN 10	2						
20	.	G46492070000	U-BOLT	2						
21	.	G40026100010	PLAIN WASHER M10	2						
22	.	G40100000060	BOLT M10X65	1						
23	.	G40020100008	NUT M8	4						
24	.	G40027100008	SPRING WASHER M8	4						
25	.	G46494950000	PROTECTOR	1						
26	.	G40101008105	BOLT M8X105	2						
27	.	G40100000017	BOLT M8X35	1						
28	.	G46006030000	GRIP 10(BLACK	1						
29	.	G40026100010	PLAIN WASHER M10	1						
30	.	G40027100010	SPRING WASHER M10	1						
31	.	G40020100010	NUT	1						
32	.	G40300000015	KEY 5X5X20	1						
33	.	G46492300010	PULLEY	1						
34	.	G40020100008	NUT M8	2						
35	.	G40160000830	SET SCREW M8X30	2						
36	.	G40030300325	SPRING PIN 3X25	1						
37	.	G40030300525	SPRING PIN 5X25	1						
38	.	G46492330001	SHIFT LEVER	1						

N134093

N134093

11. CONTROL SECTION



1C04
1C02
NPC-3659

11. CONTROL SECTION

98.12.11

(A)=T3250 (D)=
(B)= (E)=
(C)= (F)=

REF. NO.	LEV. 0	PART NO.	DESCRIPTION	-----Q'TY-----						I	P	U	A	R
				(A)	(B)	(C)	(D)	(E)	(F)					
1	.	G40701121000	COVER		1									
2	.	G40026100008	PLAIN WASHER M8		2									
3	.	G40027100008	SPRING WASHER M8		2									
4	.	G40020100008	NUT M8		2									
5	.	G40701121100	COVER BOLT		1									
6	.	G40027100008	SPRING WASHER M8		1									
7	.	G40020100008	NUT M8		1									
8	.	G46492650000	SHIFT GUIDE		1									
9	.	G40026100006	PLAIN WASHER M6		4									
10	.	G40027100006	SPRING WASHER M6		4									
11	.	G40160000616	SCREW M6X16		4									
12	.	G41411120000	BELT COVER		1									
13	.	G40026100008	PLAIN WASHER M8		3									
14	.	G40027100008	SPRING WASHER M8		3									
15	.	G40010100816	BOLT M8X16		2									
16	.	G40020100008	NUT M8		1									
17	.	G40036800012	RETAINING RING E12		1									
18	.	G46062370010	BELT STOPPER		4									
19	.	G40026100008	PLAIN WASHER M8		4									
20	.	G40027100008	SPRING WASHER M8		4									
21	.	G40100000015	BOLT M8X25		1									
22	.	G40100000017	BOLT M8X35		1									
23	.	G40010100818	BOLT M8X18		1									
24	.	G40010100816	BOLT M8X16		1									
25	.	G40026100008	PLAIN WASHER M8		4									
26	.	G40027100008	SPRING WASHER M8		4									
27	.	G40020100008	NUT M8		4									
28	.	G46744290150	ENGINE BASE		2									
29	.	G40010100820	BOLT M8X20		4									
30	.	G40010100845	BOLT M8X45		4									
31	.	G40026100008	PLAIN WASHER M8		4									
32	.	G40027100008	SPRING WASHER M8		4									
33	.	G40020100008	NUT M8		4									
34	.	G46012720000	PLATE		2									
35	.	G40329060000	CLAMP WIRE		5									
36	.	G40080300035	V-BELT		1									
37	.	G41412220000	ENGINE PULLEY		1									
38	.	G41416020000	HANDLE		1									
39	.	G41416020100	TRACTION LEVER		1									
40	.	G46666132000	THROTTLE LEVER		1									
41	.	G46066043000	WIRE		1									
42	.	G46496130000	SIDE CLUTCH LEVER		2									
43	.	G46496040022	WIRE		2									
44	.	G40031199006	PIN 6,STPRD.STRAIGHT		2						1			
45	.	G40026100006	PLAIN WASHER M6		2									
46	.	G46062104010	SPRING		2									
47	.	G41416020200	COLLAR		2									
48	.	G47022200010	WASHER 22X9X1.6		2									
49	.	G40027100008	SPRING WASHER M8		2									
50	.	G40010100865	BOLT M8X65		2									
51	.	G40031199006	PIN 6,STPRD.STRAIGHT		1						1			
52	.	G46496040600	WIRE		1									
53	.	G46172105000	SPRING		1									
54	.	G40031199006	PIN 6,STPRD.STRAIGHT		1						1			

** CONTINUE **

N134094

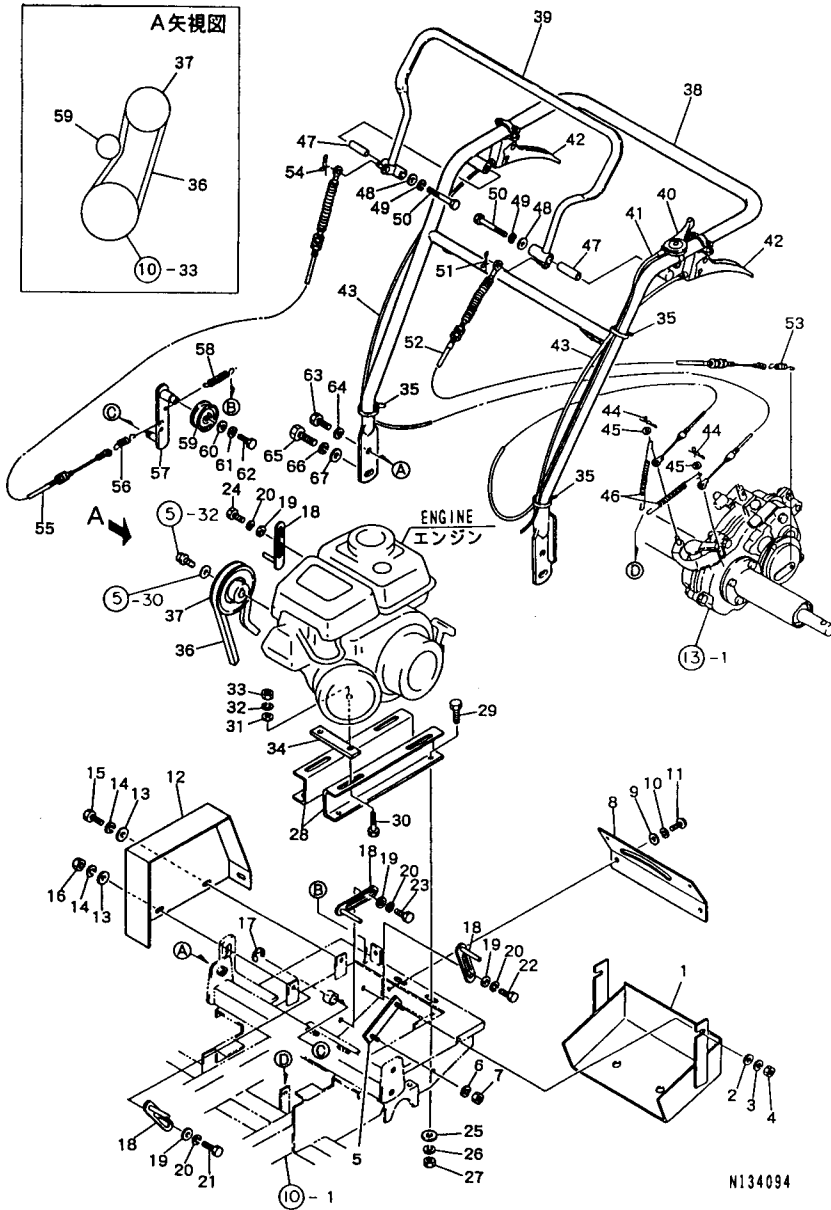
11. CONTROL SECTION

1C05
(1C02)
NPC-3659

11. CONTROL SECTION

98.12.11

(A)=T3250 (D)=
(B)= (E)=
(C)= (F)=



REF. NO.	LEV. 0	PART NO.	DESCRIPTION	-----Q'TY-----						I P/U A R
				(A)	(B)	(C)	(D)	(E)	(F)	
55	-	G46496040600	WIRE	1						
56	-	G46172105000	SPRING	1						
57	-	G46492280000	TRACTION TENSION ARM	1						
58	-	G46492100000	SPRING	1						
59	-	G46066110000	TENSION PULLEY	1						
60	-	G46066070000	WASHER 16X7X1.6	1						
61	-	G40027100006	SPRING WASHER M6	1						
62	-	G40010100612	BOLT M6X12	1						
63	-	G40010101025	BOLT M10X25	2						
64	-	G40027100010	SPRING WASHER M10	2						
65	-	G40010101225	BOLT M12X25	2						
66	-	G40027100012	SPRING WASHER M12	2						
67	-	G40026100012	PLAIN WASHER M12	2						

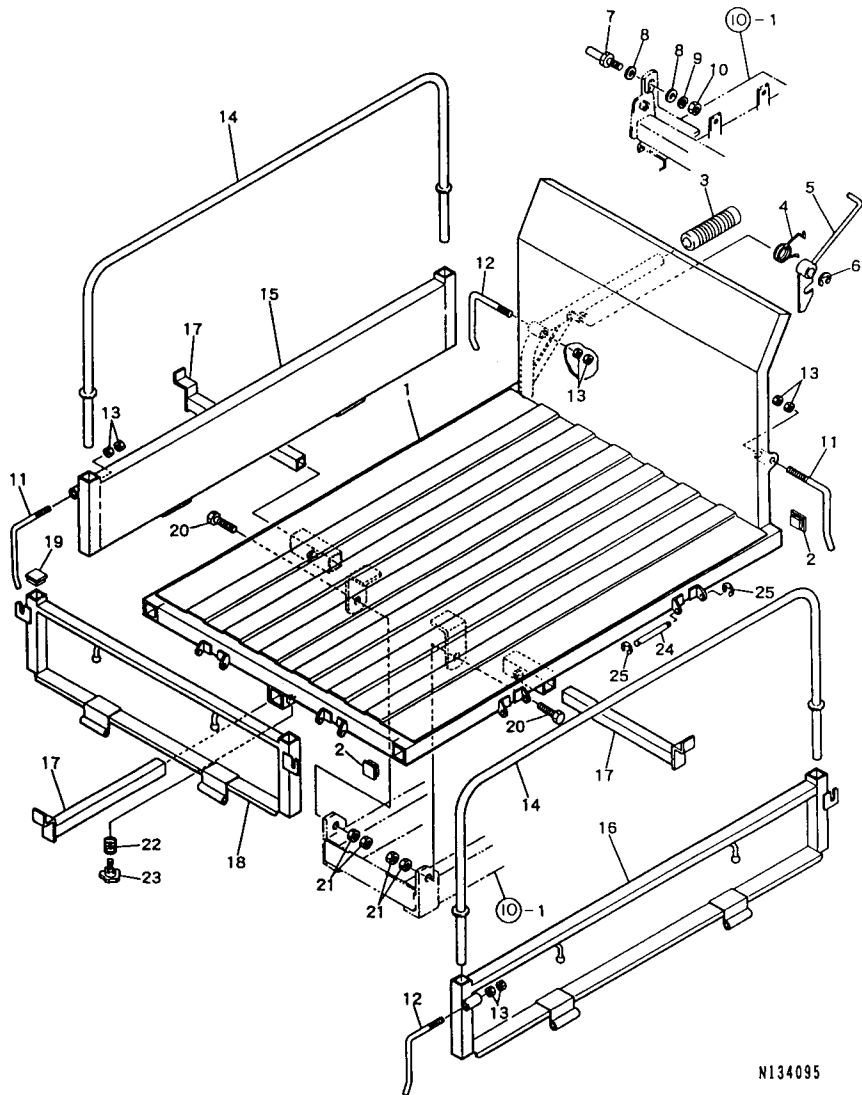
12. PLATFORM CARRIER

-----+
 1006
 (1002)
 -----+
 NPC-3659

12. PLATFORM CARRIER

98.12.11

(A)=T3250 (D)=
 (B)= (E)=
 (C)= (F)=

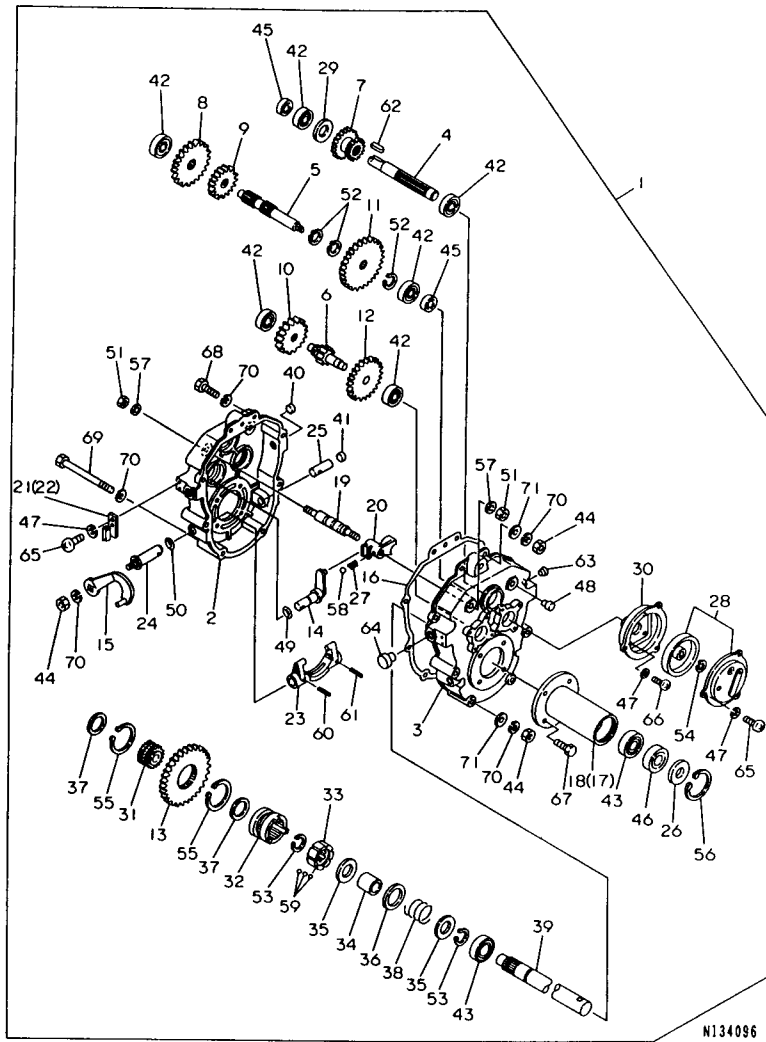


N134095

REF. NO.	LEV. O	PART NO.	DESCRIPTION	Q'TY						I	P	U	A	R
				(A)	(B)	(C)	(D)	(E)	(F)					
1	.	G41415220000	LOADING PALLET	1										
2	.	G40705260000	CAP 32X32X1.6	4										
3	.	G47276030000	GRIP 25.4(BLACK)	1										
4	.	G46062104040	SPRING	1										
5	.	G46062393000	DUMP HOOK LEVER	1										
6	.	G40036800012	RETAINING RING E12	1										
7	.	G46062070010	DUMP HOOK BOLT	1										
8	.	G40026100012	PLAIN WASHER M12	2										
9	.	G40027100012	SPRING WASHER M12	1										
10	.	G40020100012	NUT M12	1										
11	.	G46062392010	SIDE DOOR HOOK	2										
12	.	G46062392000	SIDE DOOR HOOK	2										
13	.	G40020100010	NUT M10	8										
14	.	G40725221100	SIDE DOOR PIPE	2										
15	.	G41415220100	SIDE DOOR (R)	1										
16	.	G41415220200	SIDE DOOR (L)	1										
17	.	G41415220400	STOPPER	3										
18	.	G41415220300	FRONT DOOR	1										
19	.	G40725260000	CAP 25X25X1.6	2										
20	.	G40010111445	BOLT M14X45	2										
21	.	G40020100014	NUT M14	4										
22	.	G40905220400	SPRING	3										
23	.	G40905260000	KNOB BOLT M8X20	3										
24	.	G40855220400	PIN	6										
25	.	G40036500006	RETAINING RING E6	12										

N134095

13. TRANSMISSION



1C08
(1C07)
NPC-3659

13. TRANSMISSION

98.12.11

(A)=T3250 (D)=
(B)= (E)=
(C)= (F)=

REF. NO.	LEV. 0	PART NO.	DESCRIPTION	-----Q'TY----- I P/U A R					
				(A)	(B)	(C)	(D)	(E)	(F)
1	.	G46496011002	TRANSMISSION ASSY	1					
2	..	G46496990000	CASE R, TRANSMISSION	1					
3	..	G46496990010	CASE L, TRANSMISSION	1					
4	..	G46496990020	SHAFT	1					
5	..	G46496990030	SHAFT, 2ND	1					
6	..	G46496990040	SHAFT, PINION 8T	1					
7	..	G46496990050	SLIDE GEAR 12T/20T	1					
8	..	G46496990060	GEAR 35T	1					
9	..	G46496990070	GEAR 25T	1					
10	..	G46496990080	GEAR 30T	1					
11	..	G46496990090	GEAR (F 43T	1					
12	..	G46496990100	GEAR (R 43T	1					
13	..	G46496990110	GEAR 50T	1					
14	..	G46496990120	LEVER, SHIFT	1					
15	..	G46496990130	LEVER, SIDE CLUTCH	2					
16	..	G46496990140	PACKING, GEAR BOX	1					
17	..	G46496990150	CASE R, AXLE	1					
18	..	G46496990160	CASE L, AXLE	1					
19	..	G46496990170	SHIFTER ROD	1					
20	..	G46496990180	SHIFTER, GEAR	1					
21	..	G46496990190	WIRE METAL (R	1					
22	..	G46496990200	WIRE METAL (L	1					
23	..	G46496990210	SHIFT LEVER	2					
24	..	G46496990220	LEVER, SHIFT UPPR	2					
25	..	G46496990230	LEVER, SHIFT LOWR	2					
26	..	G46496990240	COVER, OIL SEAL	2					
27	..	G46496990250	SPRING, SHIFT FORK	1					
28	..	G46496990260	BRAKE ASSY	1					
29	..	G46496990270	SPACER	1					
30	..	G46496990280	MOUNT, BRAKE	1					
31	..	G46496990290	BOSS, SPLINE	1					
32	..	G46496990300	SIDE CLUTCH	2					
33	..	G46496990310	GUIDE, BALL	2					
34	..	G46496990320	COLLR	2					
35	..	G46496990330	COLLR 1	4					
36	..	G46496990340	SPRING SHOE	2					
37	..	G46496990350	COLLR 2	2					
38	..	G46496990360	SPRING, SIDE CLUTCH	2					
39	..	G46496990370	SHAFT	2					
40	..	G46496990380	BLINDED TAP 15	2					
41	..	G46496990390	BLINDED TAP	2					
42	..	G40040106202	BALL BEARING 6202	6					
43	..	G40040106005	BALL BEARING 6005	4					
44	..	G40020100008	NUT M8	10					
45	..	G46496990400	OIL SEAL TC153007	2					
46	..	G46496990410	OIL SEAL TC254708	2					
47	..	G40027100006	SPRING WASHER M6	11					
48	..	G46496990440	BLINDED TAP 10	2					
49	..	G40052100110	O-RING P11	1					
50	..	G40052100140	O-RING P14	1					
51	..	G40020300010	NUT M10	2					
52	..	G40036100019	RETAINING RING S19	3					
53	..	G40036100025	RETAINING RING S25	4					
54	..	G40036100014	RETAINING RING S14	1					

** CONTINUE **

N134096

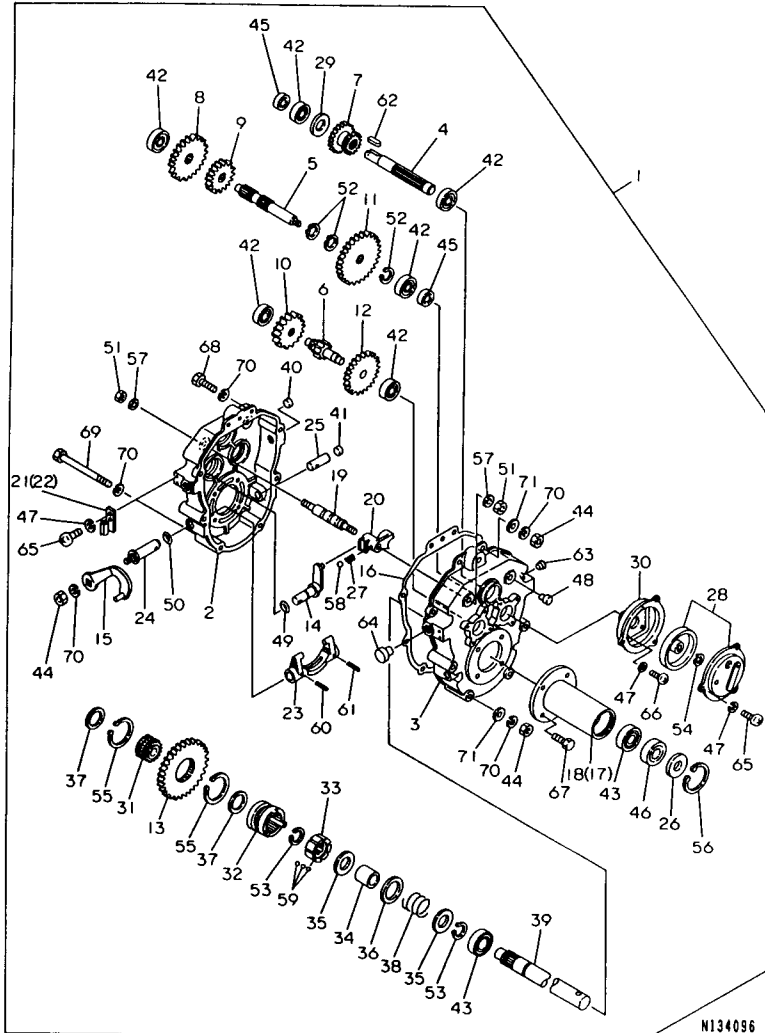
13. TRANSMISSION

1C09
1C07
NPC-3659

13. TRANSMISSION

98.12.11

(A)=T3250 (D)=
(B)= (E)=
(C)= (F)=



REF. NO.	LEV. 0	PART NO.	DESCRIPTION	Q'TY						I P/U A R
				(A)	(B)	(C)	(D)	(E)	(F)	
55	..	G40036100045	RETAINING RING S45	2						
56	..	G46496990450	RETAINING RING H47	2						
57	..	G40025100010	WASHER, SEAL 10	2						
58	..	G40048109998	BALL 8, STEEL	1						
59	..	G40048109994	BALL 4, STEEL	30						
60	..	G40030300520	SPRING PIN 5X20	2						
61	..	G40030300420	SPRING PIN 4X20	2						
62	..	G40300000015	KEY 5X5X20	1						
63	..	G46496990460	PLUG	1						
64	..	G46496990470	PLUG, OIL 15	1						
65	..	G40015100610	SCREW M6X10	7						
66	..	G40015100615	SCREW M6X15	4						
67	..	G40010100820	BOLT M8X20	8						
68	..	G40100000016	BOLT M8X30	4						
69	..	G40010100895	BOLT M8X95	4						
70	..	G40027100008	SPRING WASHER M8	18						
71	..	G40026100008	PLAIN WASHER M8	18						

PART NO.	GRP. NO.	REF. NO.	LOC. NO.	PART NO.	GRP. NO.	REF. NO.	LOC. NO.	PART NO.	GRP. NO.	REF. NO.	LOC. NO.	PART NO.	GRP. NO.	REF. NO.	LOC. NO.
G40010100612	11	62	1C05	G40027100010	10	30	1C03	G41411120000	11	12	1C04	G46496990130	13	15	1C08
G40010100816	11	15	1C04		11	64	1C05	G41412220000	11	37	1C04	G46496990140	13	16	1C08
		24	1C04	G40027100012	10	15	1C03	G41415220000	12	1	1C06	G46496990150	13	17	1C08
G40010100818	11	23	1C04		11	66	1C05	G41415220100	12	15	1C06	G46496990160	13	18	1C08
G40010100820	11	29	1C04		12	9	1C06	G41415220200	12	16	1C06	G46496990170	13	19	1C08
	13	67	1C09	G40030300325	10	36	1C03	G41415220300	12	18	1C06	G46496990180	13	20	1C08
G40010100845	11	30	1C04	G40030300420	13	61	1C09	G41415220400	12	17	1C06	G46496990190	13	21	1C08
G40010100865	11	50	1C04	G40030300520	13	60	1C09	G41416020000	11	38	1C04	G46496990200	13	22	1C08
G40010100895	13	69	1C09	G40030300525	10	37	1C03	G41416020100	11	39	1C04	G46496990210	13	23	1C08
G40010101025	11	63	1C05	G40031199006	11	44	1C04	G41416020200	11	47	1C04	G46496990220	13	24	1C08
G40010101225	11	65	1C05		51	1C04	G41500120000	10	13	1C03	G46496990230	13	25	1C08	
G40010111225	10	16	1C03		54	1C04	G41500120100	10	14	1C03	G46496990240	13	26	1C08	
G40010111445	12	20	1C06	G40031199010	10	19	1C03	G46006030000	10	28	1C03	G46496990250	13	27	1C08
G40015100610	13	65	1C09	G40031311055	10	17	1C03	G46012720000	11	34	1C04	G46496990260	13	28	1C08
G40015100615	13	66	1C09	G40036100014	13	54	1C08	G46016511000	10	11	1C03	G46496990270	13	29	1C08
G40020100008	10	23	1C03	G40036100019	13	52	1C08	G46062070010	12	7	1C06	G46496990280	13	30	1C08
		34	1C03	G40036100025	13	53	1C08	G46062104010	11	46	1C04	G46496990290	13	31	1C08
	11	4	1C04	G40036100045	13	55	1C09	G46062104040	12	4	1C06	G46496990300	13	32	1C08
		7	1C04	G40036500006	12	25	1C06	G46062370010	11	18	1C04	G46496990310	13	33	1C08
		16	1C04	G40036800012	11	17	1C04	G46062392000	12	12	1C06	G46496990320	13	34	1C08
		27	1C04		12	6	1C06	G46062392010	12	11	1C06	G46496990330	13	35	1C08
		33	1C04	G40040106005	13	43	1C08	G46062393000	12	5	1C06	G46496990340	13	36	1C08
	13	44	1C08	G40040106202	13	42	1C08	G46066043000	11	41	1C04	G46496990350	13	37	1C08
G40020100010	10	31	1C03	G40048109994	13	59	1C09	G46066070000	11	60	1C05	G46496990360	13	38	1C08
	12	13	1C06	G40048109998	13	58	1C09	G46066110000	11	59	1C05	G46496990370	13	39	1C08
G40020100012	12	10	1C06	G40052100110	13	49	1C08	G46172105000	11	53	1C04	G46496990380	13	40	1C08
G40020100014	12	21	1C06	G40052100140	13	50	1C08		56	1C05	G46496990390	13	41	1C08	
G40020100016	10	6	1C03	G40052300450	10	12	1C03	G46376512000	10	3	1C03	G46496990400	13	45	1C08
G40020300010	13	51	1C08	G40080300035	11	36	1C04	G46492070000	10	20	1C03	G46496990410	13	46	1C08
G40025100010	13	57	1C09	G40100000015	11	21	1C04	G46492100000	11	58	1C05	G46496990440	13	48	1C08
G40026100006	11	9	1C04	G40100000016	13	68	1C09	G46492280000	11	57	1C05	G46496990450	13	56	1C09
		45	1C04	G40100000017	10	27	1C03	G46492300010	10	33	1C03	G46496990460	13	63	1C09
G40026100008	11	2	1C04		11	22	1C04	G46492330001	10	38	1C03	G46496990470	13	64	1C09
		13	1C04	G40100000060	10	22	1C03	G46492650000	11	8	1C04	G46666132000	11	40	1C04
		19	1C04	G40101008105	10	26	1C03	G46494950000	10	25	1C03	G46744290150	11	28	1C04
		25	1C04	G4010146005A	10	10	1C03	G46496011002	13	1	1C08	G46746230100	10	2	1C03
		31	1C04	G40160000616	11	11	1C04	G46496040022	11	43	1C04	G47022200010	11	48	1C04
	13	71	1C09	G40160000830	10	35	1C03	G46496040600	11	52	1C04	G47276030000	12	3	1C06
G40026100010	10	21	1C03	G40300000015	10	32	1C03		55	1C05	G48501081000	10	9	1C03	
		29	1C03		13	62	1C09	G46496130000	11	42	1C04	106990-44660	6	22	1B08
G40026100012	11	67	1C05	G40329060000	11	35	1C04	G46496203000	10	5	1C03	114250-21290	5	10	1B07
	12	8	1C06	G40701121000	11	1	1C04	G46496990000	13	2	1C08	114270-01600	1	5	1B03
G40027100006	11	10	1C04	G40701121100	11	5	1C04	G46496990010	13	3	1C08	114770-61600	8	5	1B10
		61	1C05	G40705260000	12	2	1C06	G46496990020	13	4	1C08	124060-77680	6	25	1B08
	13	47	1C08	G40725221100	12	14	1C06	G46496990030	13	5	1C08	160110-92610	3	9	1B05
G40027100008	10	24	1C03	G40725260000	12	19	1C06	G46496990040	13	6	1C08	160110-92710	3	11	1B05
	11	3	1C04	G40850160100	10	4	1C03	G46496990050	13	7	1C08	160120-76940	8	10	1B10
		6	1C04	G40855220400	12	24	1C06	G46496990060	13	8	1C08		21	1B10	
		14	1C04	G40905220400	12	22	1C06	G46496990070	13	9	1C08	160120-92700	3	10	1B05
		20	1C04	G40905260000	12	23	1C06	G46496990080	13	10	1C08	160260-78700	6	26	1B08
		26	1C04	G41400120200	10	7	1C03	G46496990090	13	11	1C08	160341-01950	9	25	1B11
		32	1C04	G41410020000	10	1	1C03	G46496990100	13	12	1C08	160393-55050	6	10	1B08
		49	1C04	G41410120000	10	8	1C03	G46496990110	13	13	1C08	160490-11010	2	7	1B04
	13	70	1C09	G41410120100	10	18	1C03	G46496990120	13	14	1C08	160490-11120	2	14	1B04

PART NO.	GRP. NO.	REF. NO.	LOC. NO.	PART NO.	GRP. NO.	REF. NO.	LOC. NO.	PART NO.	GRP. NO.	REF. NO.	LOC. NO.	PART NO.	GRP. NO.	REF. NO.	LOC. NO.
160490-11290	2	20	1B04	160510-14550	5	30	1B07	160710-55360	6	16	1B08				
160490-11300	2	21	1B04	160510-56610	7	13	1B09	160710-55370	6	17	1B08				
160490-11310	2	22	1B04	160510-56620	7	15	1B09	160710-55382	6	18	1B08				
160490-12500	4	3	1B06	160520-03050	2	1	1B04	160710-55390	6	19	1B08				
160490-12520	4	4	1B06	160520-07272	3	7	1B05	160710-56710	7	20	1B09				
160490-14200	5	11	1B07	160520-66291	8	22	1B10	160762-12050	4	2	1B06				
160490-14400	5	12	1B07	160530-21200	5	16	1B07	160769-56720	7	21	1B09				
160490-22010	5	20	1B07	160590-21210	5	17	1B07	160793-78010	9	32	1B11				
160490-22300	5	26	1B07	160610-03050	2	2	1B04	160810-21290	5	31	1B07				
160490-23030	5	28	1B07	160610-04201	2	5	1B04	160991-07260	3	6	1B05				
160490-45010	9	40	1B11	160610-04570	4	1	1B06	181130-56640	7	18	1B09				
160490-45140	9	1	1B11	160610-04620	2	6	1B04	181230-56380	7	24	1B09				
160490-45220	9	4	1B11	160610-12530	4	5	1B06	22252-000120	5	27	1B07				
160490-45230	9	3	1B11	160610-12540	4	6	1B06	22372-080000	8	11	1B10				
160490-45240	9	38	1B11	160610-12550	4	7	1B06	24101-062030	1	9	1B03				
160490-56011	7	1	1B09	160610-21290	5	18	1B07			16	1B03				
160490-56590	7	10	1B09	160610-55100	6	11	1B08	24311-000100	1	6	1B03				
160490-56600	7	11	1B09	160610-56630	7	17	1B09			13	1B03				
160490-59350	6	23	1B08	160610-56900	7	25	1B09	24311-000150	1	21	1B03				
160490-59360	6	24	1B08	160611-01740	1	19	1B03	26106-060082	9	22	1B11				
160490-66020	8	12	1B10	160611-14560	5	9	1B07	26106-060102	6	20	1B08				
160490-66190	8	25	1B10	160611-77250	9	23	1B11	26106-060162	5	32	1B07				
160490-66200	8	28	1B10	160664-07370	3	8	1B05	26106-060302	5	29	1B07				
160490-66211	8	29	1B10	160664-11100	2	12	1B04	26106-100162	1	7	1B03				
160490-76051	9	8	1B11	160664-11110	2	13	1B04			14	1B03				
160490-76251	9	9	1B11	160664-11180	2	15	1B04	26117-040088	8	18	1B10				
160490-76511	9	11	1B11	160664-66220	8	19	1B10	26117-040257	8	23	1B10				
160490-76580	9	19	1B11	160667-56151	7	26	1B09	26347-060002	8	24	1B10				
160490-76591	9	21	1B11	160667-56160	7	27	1B09	26366-060002	4	8	1B06				
160490-76600	9	20	1B11	160667-56750	7	22	1B09			12	1B06				
160490-76611	9	10	1B11	160670-66350	8	20	1B10			8	26	1B10			
160490-78090	9	27	1B11	160690-11221	2	17	1B04	26366-080002	9	24	1B11				
160490-78230	9	26	1B11	160690-11271	2	18	1B04	26376-120002	5	19	1B07				
160490-78540	9	28	1B11	160690-11280	2	19	1B04	26476-060142	2	23	1B04				
160490-78550	9	29	1B11	160690-61301	8	2	1B10			6	21	1B08			
160492-56520	7	3	1B09	160690-61311	8	3	1B10			9	2	1B11			
160492-56530	7	4	1B09	160690-61450	8	4	1B10			6	1B11				
160492-56540	7	5	1B09	160690-61600	8	6	1B10			7	1B11				
160492-56550	7	6	1B09	160690-76531	9	13	1B11			39	1B11				
160492-56570	7	8	1B09	160690-76540	9	14	1B11	26476-060202	1	18	1B03				
160492-56581	7	9	1B09	160690-76561	9	15	1B11	26476-060302	9	30	1B11				
160492-56610	7	12	1B09	160690-76570	9	16	1B11	28110-100120	3	12	1B05				
160492-56620	7	14	1B09	160690-76801	9	12	1B11	29610-000650	9	31	1B11				
160492-56630	7	16	1B09	160692-55300	6	13	1B08	29610-000950	9	36	1B11				
160492-66100	8	13	1B10	160692-56710	7	19	1B09	29610-001400	9	37	1B11				
160495-56561	7	7	1B09	160692-56770	7	23	1B09	760490-01500	1	10	1B03				
160495-56600	7	2	1B09	160692-66051	8	14	1B10	760490-01562	1	1	1B03				
160498-01330	2	4	1B04	160698-76580	9	17	1B11	760490-21700	5	13	1B07				
160498-13550	4	10	1B06	160699-11200	2	16	1B04	760490-22500	5	22	1B07				
160498-14050	5	1	1B07	160700-78040	9	33	1B11	760493-55700	6	1	1B08				
160510-02220	1	8	1B03	160700-78050	9	34	1B11								
		15	1B03	160700-78720	9	35	1B11								
160510-03180	2	3	1B04	160708-55150	6	12	1B08								
160510-13200	4	9	1B06	160710-55061	6	3	1B08								



YANMAR AGRICULTURAL EQUIPMENT CO.,LTD.

1-32, Chayamachi, Kita-ku, OSAKA 530-8321, JAPAN

Tel:06-6376-6348



PARTS CATALOG

Published

2008/7 (Jul.)

0CNP3-G66000

ESPECIFICACIONES

Modelo		T6350
Motore	Modelo	GA160SCSA
	tipo	OHV (4 tempi benzina)
	potenza	5.8/4000
	avviamento	a fune autoavvolgente
Dimensioni	lunghezza mm	1610
	larghezza mm	680
	altezza mm	1015
Peso	Kg.	190
Piattaf. carico dimensioni	lunghezza mm	920/1120
	larghezza mm	615/1050
	altezza	150
Portata max	Kg.	(350) 450
Sollev. pianale	Kg.	manuale
Trasmissione	n.marce.	2 avani + 2 retro
	frizione	a tensione a cinghia
	freno	ad espansione interna
Carro cingolato	appoggio mm	640
	larghezza mm	180
	interasse	470
Tendicingolo		a molla
Velocità	1A	1,7
	2A	2,9
	1R	1,6
	2R	2,8

CONTENTS

MODEL : T6350(
PC NO : 0CNP3-G66000

Fig.No. GROUP NAME

ENGINE UNIT(GA160E-SCSA)

1. CYLINDER BLOCK
2. CYLINDER HEAD & BONNET
3. TOOL & LABEL
4. AIR CLEANER & MUFFLER
5. CRANKSHAFT,PISTON & CAMSHAFT
6. FUEL OIL TANK & FUEL OIL LINE
7. CARBURETOR
8. GOVERNOR & CONTROL DEVICE
9. FLY.MAGNET & STARTING DEVICE

BODY SECTION

10. FRAME
11. CONTROL SECTION
12. PLATFORM CARRIER

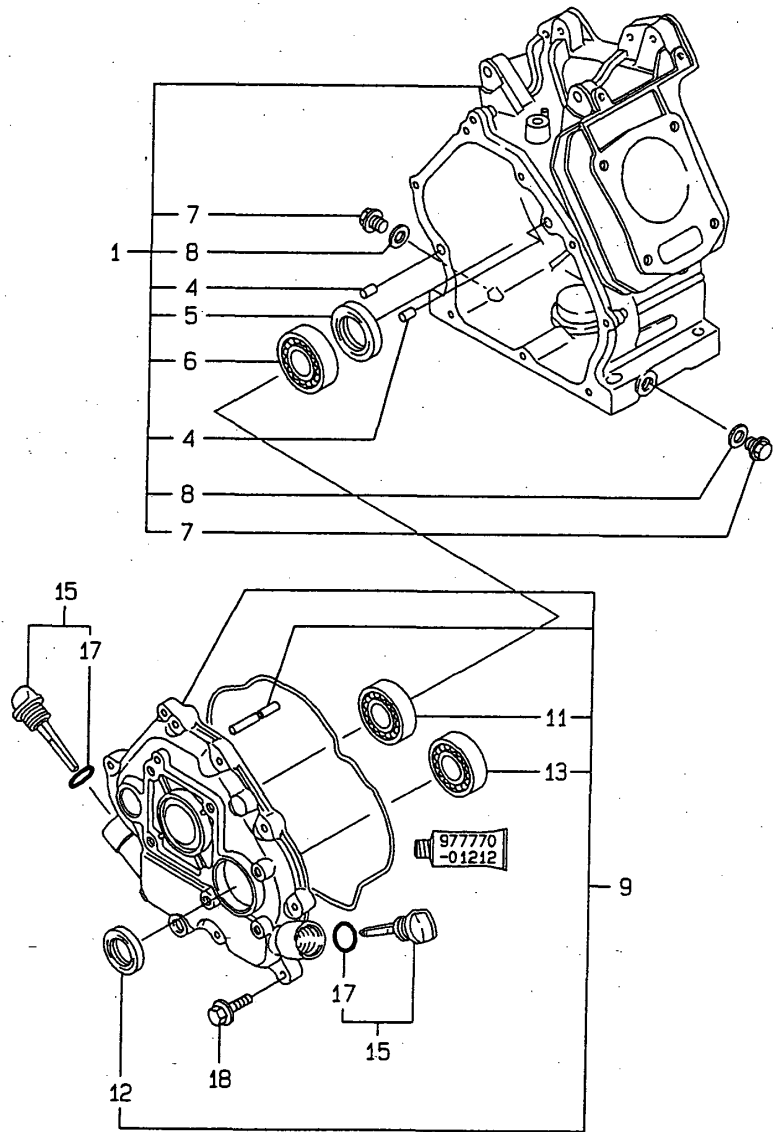
TRANSMISSION UNIT

13. TRANSMISSION

Fig.No. GROUP NAME

Fig.1. CYLINDER BLOCK

1. CYLINDER BLOCK



0CNP3-G66000 1. CYLINDER BLOCK

(A)=GA160E-SCSA

(B)=

(C)=

(D)=

(E)=

(F)=

REF.	LEV.	PARTS NO.	DESCRIPTION	QTY						I	R
				(A)	(B)	(C)	(D)	(E)	(F)		
1	1	760690-01561	BLOCK ASSY, CYLINDER	1							
4	2	114270-01600	PARALLEL PIN 8X12	2							
5	2	160690-02220	OIL SEAL TC25416	1							
6	2	24101-062050	BALL BEARING	1							
7	2	160610-01690	PLUG, DRAIN	2							
8	2	104200-59170	GASKET 12	2							
9	1	760690-01510	COVER ASSY, SIDE	1							
11	2	24101-062050	BALL BEARING	1							
12	2	160690-02220	OIL SEAL TC25416	1							
13	2	24101-062050	BALL BEARING	1							
15	1	114299-01760	CAP, W/LUB.OIL GAUGE	2							
17	2	114299-01950	O-RING	2							
18	1	26476-060252	BOLT M 6X 25,TAPPING	8							

Remarks

(REMARKS)"EFFECTIVE MACHINE NO." OF ENGINE IS INDICATED ON THE ENGINE LABEL WHICH IS SHOWN IN FIG.9.

Fig.2. CYLINDER HEAD & BONNET

2. CYLINDER HEAD & BONNET

(A)=GA160E-SCSA

(B)=

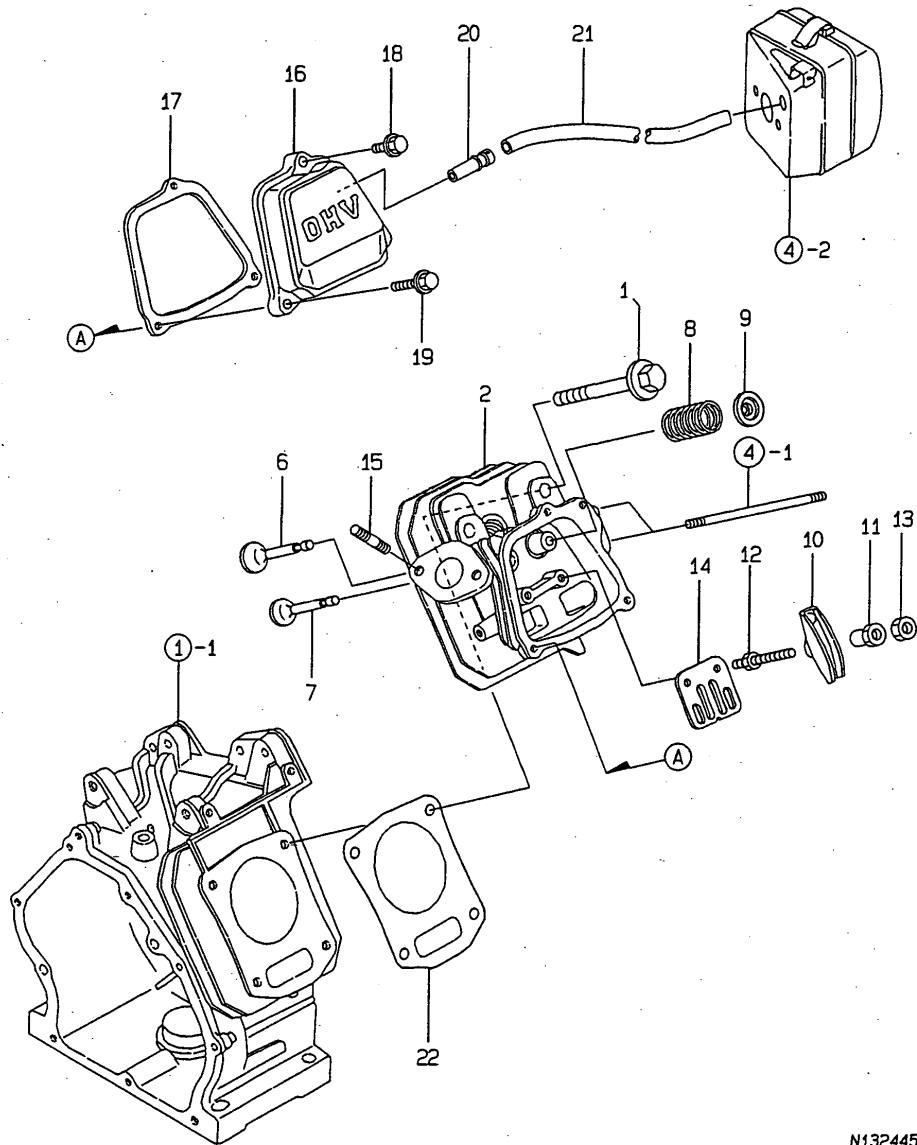
(C)=

(D)=

(E)=

(F)=

2. CYLINDER HEAD & BONNET



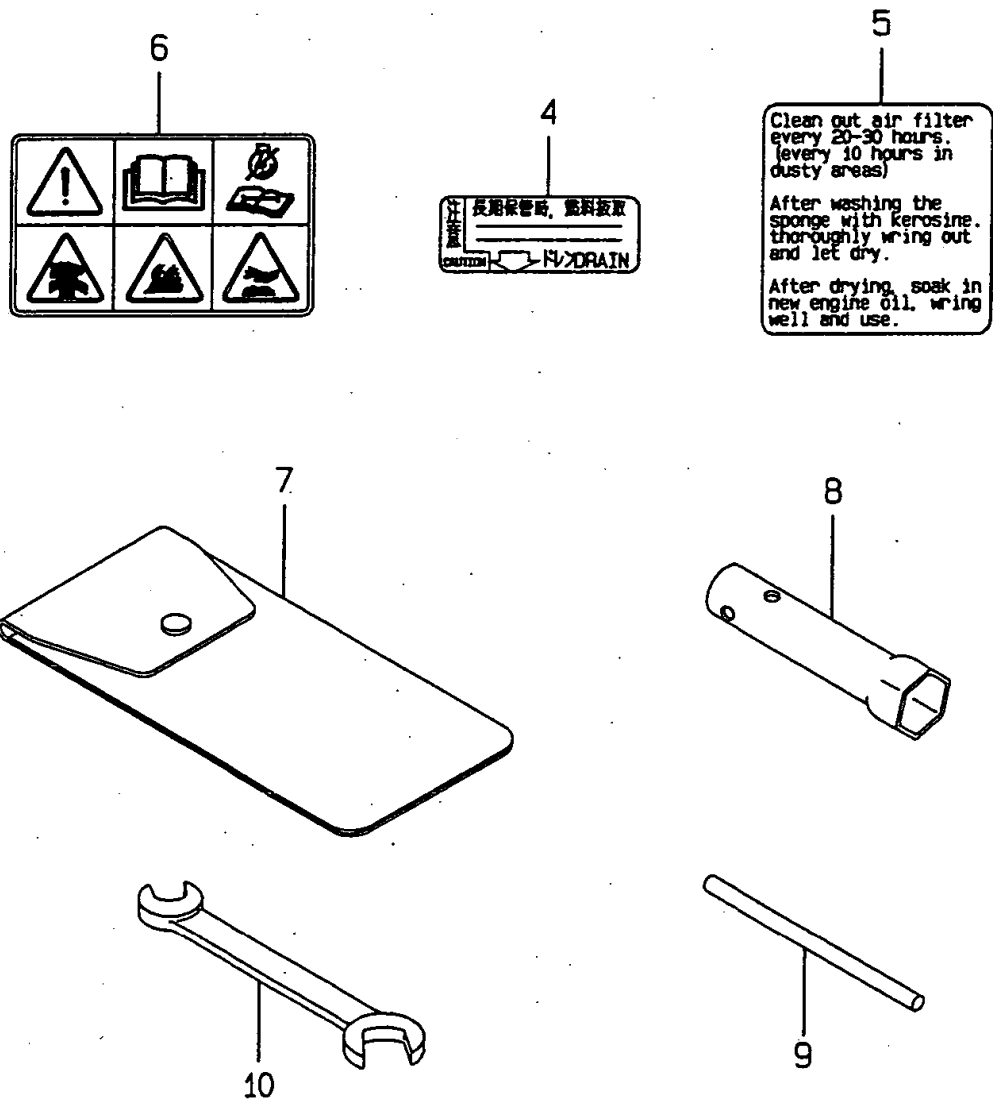
REF.	LEV.	PARTS NO.	DESCRIPTION	QTY						I	R
				(A)	(B)	(C)	(D)	(E)	(F)		
1	1	160610-04201	BOLT M 8X 53	4							
2	1	160690-11010	HEAD ASSY, CYLINDER	1							
6	1	160690-11100	VALVE, INTAKE	1							
7	1	160690-11110	VALVE, EXHAUST	1							
8	1	160690-11120	SPRING, VALVE	2							
9	1	160690-11180	RETAINER, SPRING	2							
10	1	160690-11200	ARM, ROCKER	2							
11	1	160690-11221	PIVOT,ROCKER ARM	2							
12	1	160690-11271	BOLT	2							
13	1	160690-11280	NUT M6X 0.5	2							
14	1	160690-11290	PLATE, GUIDE	1							
15	1	26216-080182	STUD M 8X 18 PLATED	2							
16	1	160690-11300	BONNET	1							
17	1	160690-11310	GASKET, BONNET	1							
18	1	26106-060202	BOLT M 6X 20 PLATED	1							
19	1	26106-060352	BOLT M 6X 35 PLATED	2							
20	1	160690-03050	BREATHER	1							
21	1	160810-03180	PIPE, BREATHER	1							
22	1	160690-01330	GASKET, CYL. HEAD	1							

N132445

Remarks
 (REMARKS)"EFFECTIVE MACHINE NO." OF
 ENGINE IS INDICATED ON THE
 ENGINE LABEL WHICH IS SHOWN
 IN FIG.9.

Fig.3. TOOL & LABEL

3. TOOL & LABEL



Remarks
 (REMARKS)"EFFECTIVE MACHINE NO." OF
 ENGINE IS INDICATED ON THE
 ENGINE LABEL WHICH IS SHOWN
 IN FIG.9.

OCNP3-G66000 3. TOOL & LABEL

(A)=GA160E-SCSA (D)=
 (B)= (E)=
 (C)= (F)=

REF.	LEV.	PARTS NO.	DESCRIPTION	QTY						I	R
				(A)	(B)	(C)	(D)	(E)	(F)		
4	1	160520-07272	LABEL, DRAIN	1							
5	1	160664-07370	LABEL, AIR CLEANER	1							
6	1	160991-07260	LABEL	1							
7	1	160110-92610	BAG, TOOL	1							
8	1	160120-92700	SPANNER, BOX	1							
9	1	160110-92710	BAR	1							
10	1	28110-100120	WRENCH 10X12	1							

Fig.4. AIR CLEANER & MUFFLER

OCNP3-G66000 4. AIR CLEANER & MUFFLER

(A)=GA160E-SCSA

(B)=

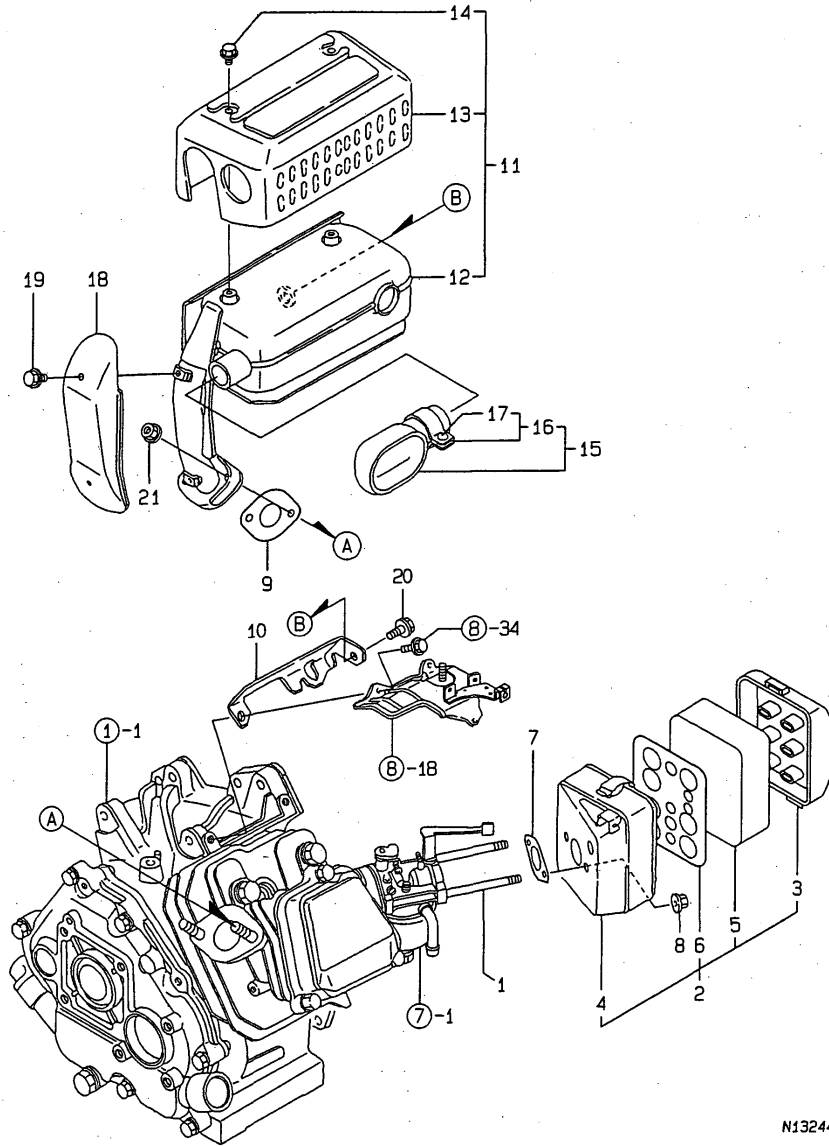
(C)=

(D)=

(E)=

(F)=

4. AIR CLEANER & MUFFLER

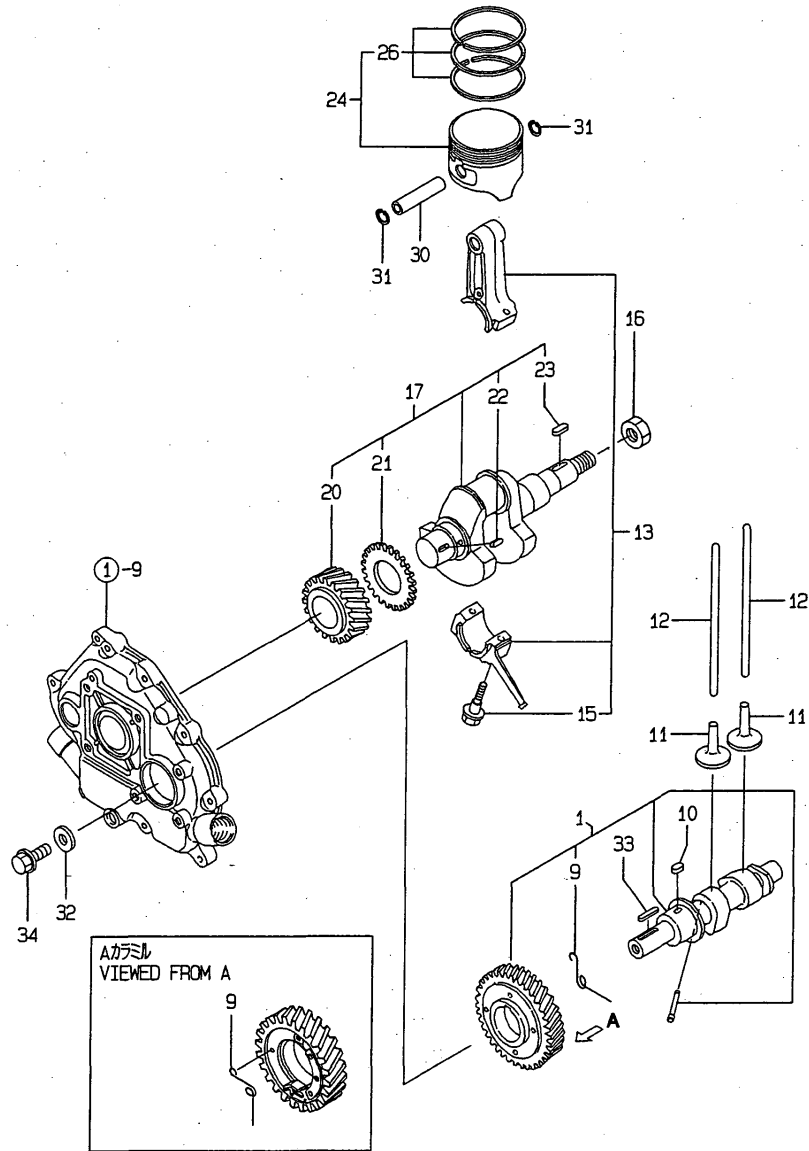


REF.	LEV.	PARTS NO.	DESCRIPTION	QTY						I	R
				(A)	(B)	(C)	(D)	(E)	(F)		
1	1	160610-04570	BOLT M 6X 70	2							
2	1	160690-12600	CLEANER ASSY, AIR	1							
3	2	160690-12510	CAP, AIR CLEANER	1							
4	2	160690-12530	BODY, AIR CLEANER	1							
5	2	160760-12530	ELEMENT	1							
6	2	160493-12550	HOLDER, ELEMENT	1							
7	1	160610-56150	GASKET, CARBURETOR	1							
8	1	26366-060002	NUT M 6	2							
9	1	160690-13200	GASKET, MUFFLER	1							
10	1	160690-13550	BRACKET, MUFFLER	1							
11	1	160690-13600	MUFFLER W/COVER	1							
12	2	160690-13500	MUFFLER	1							
13	2	160690-13530	COVER, MUFFLER	1							
14	2	26106-060082	BOLT M 6X 8 PLATED	3							
15	1	114252-13800	PIPE ASSY, EXTERNAL	1							
16	2	114252-13910	CLAMP	1							
17	3	114252-13960	SCREW 6X 25	1							
18	1	160690-13900	COVER, ELBOW	1							
19	1	114252-13950	BOLT M 6X 8 PLATED	2							
20	1	26106-080142	BOLT M 8X 14 PLATED	1							
21	1	26366-080002	NUT M 8	2							

Remarks
 (REMARKS)"EFFECTIVE MACHINE NO." OF
 ENGINE IS INDICATED ON THE
 ENGINE LABEL WHICH IS SHOWN
 IN FIG.9.

Fig.5. CRANKSHAFT,PISTON & CAMSHAFT

5. CRANKSHAFT,PISTON & CAMSHAFT



Remarks
 (REMARKS)"EFFECTIVE MACHINE NO." OF
 ENGINE IS INDICATED ON THE
 ENGINE LABEL WHICH IS SHOWN
 IN FIG.9.

OCNP3-G66000 5. CRANKSHAFT,PISTON & CAMSHAFT

(A)=GA160E-SCSA

(B)=

(C)=

(D)=

(E)=

(F)=

REF.	LEV.	PARTS NO.	DESCRIPTION	QTY						I	R
				(A)	(B)	(C)	(D)	(E)	(F)		
1	1	160690-14051	CAMSHAFT ASSY	1							
9	2	160690-14571	SPRING, DECOMP.	1							
10	1	22512-040120	KEY 4X 12	1							
11	1	160490-14200	TAPPET	2							
12	1	114250-14400	ROD, PUSH	2							
13	1	760690-23700	ROD ASSY, CONNECTING	1							
15	2	26106-060302	BOLT M 6X 30 PLATED	2							
16	1	160610-04910	NUT M14	1							
17	1	760690-21702	CRANKSHAFT COMP	1							
20	2	160690-21201	GEAR, CRANKSHAFT	1							
21	2	160590-21210	GEAR, IDLE	1							
22	2	22512-040120	KEY 4X 12	1							
23	2	22512-040160	KEY 4X 16	1							
24	1	160690-22011	PISTON W/RINGS	1							
26	2	760690-22501	RING SET (T.R.=1.5)	1							
30	1	160690-22300	PIN, PISTON	1							
31	1	22252-000160	CIRCLIP 16	2							
32	1	160310-14550	WASHER	1							
33	1	22512-050300	KEY 5X 30	1							
34	1	26106-080202	BOLT M 8X 20 PLATED	1							

Fig.6. FUEL OIL TANK & FUEL OIL LINE

(A)=GA160E-SCSA

(B)=

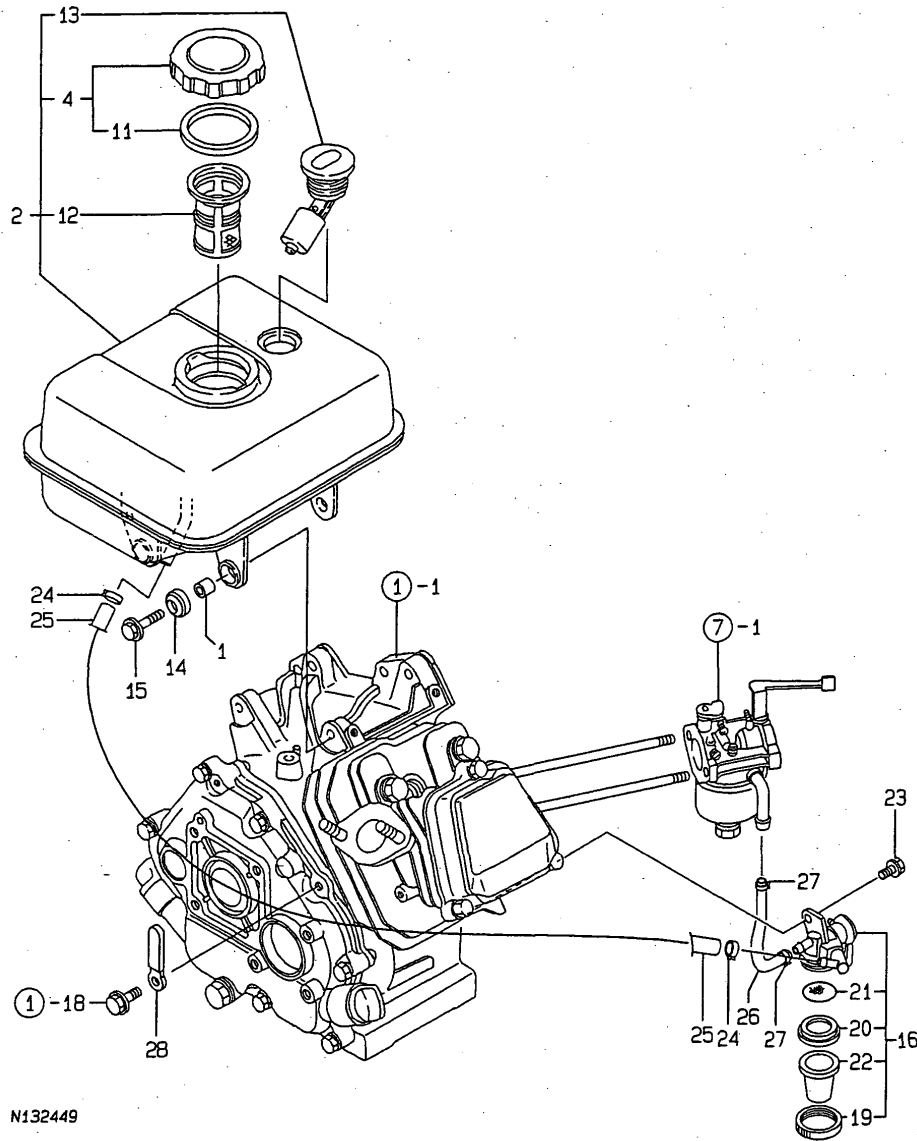
(C)=

(D)=

(E)=

(F)=

6. FUEL OIL TANK & FUEL OIL LINE



REF.	LEV.	PARTS NO.	DESCRIPTION	QTY						I	R
				(A)	(B)	(C)	(D)	(E)	(F)		
1	1	114250-45310	COLLAR	4							
2	1	760690-55710	TANK ASSY, FUEL	1							
4	2	160710-55061	CAP ASSY, FUEL TANK	1							
11	3	160393-55050	GASKET, TANK CAP	1							
12	2	160610-55100	STRAINER	1							
13	2	160762-55150	GAUGE, FUEL	1							
14	1	160690-55461	DAMPER, FUEL TANK	4							
15	1	160690-55140	BOLT, FAN CASE	4							
16	1	160692-55300	COCK ASSY, FUEL	1							
19	2	160710-55360	RING	1							
20	2	160710-55370	GASKET	1							
21	2	160710-55382	FILTER	1							
22	2	160710-55390	BOWL, STRAINER	1							
23	1	26106-060102	BOLT M 6X 10 PLATED	1							
24	1	106990-44660	CLIP,HOSE	2							
25	1	160802-59370	PIPE, FUEL	1							
26	1	160820-59390	PIPE, FUEL	1							
27	1	124060-77680	CLAMP 10	2							
28	1	160710-78710	CLAMP, CORD	1							

N132449

Remarks
 (REMARKS)"EFFECTIVE MACHINE NO." OF
 ENGINE IS INDICATED ON THE
 ENGINE LABEL WHICH IS SHOWN
 IN FIG.9.

Fig.7. CARBURETOR

(A)=GA160E-SCSA

(B)=

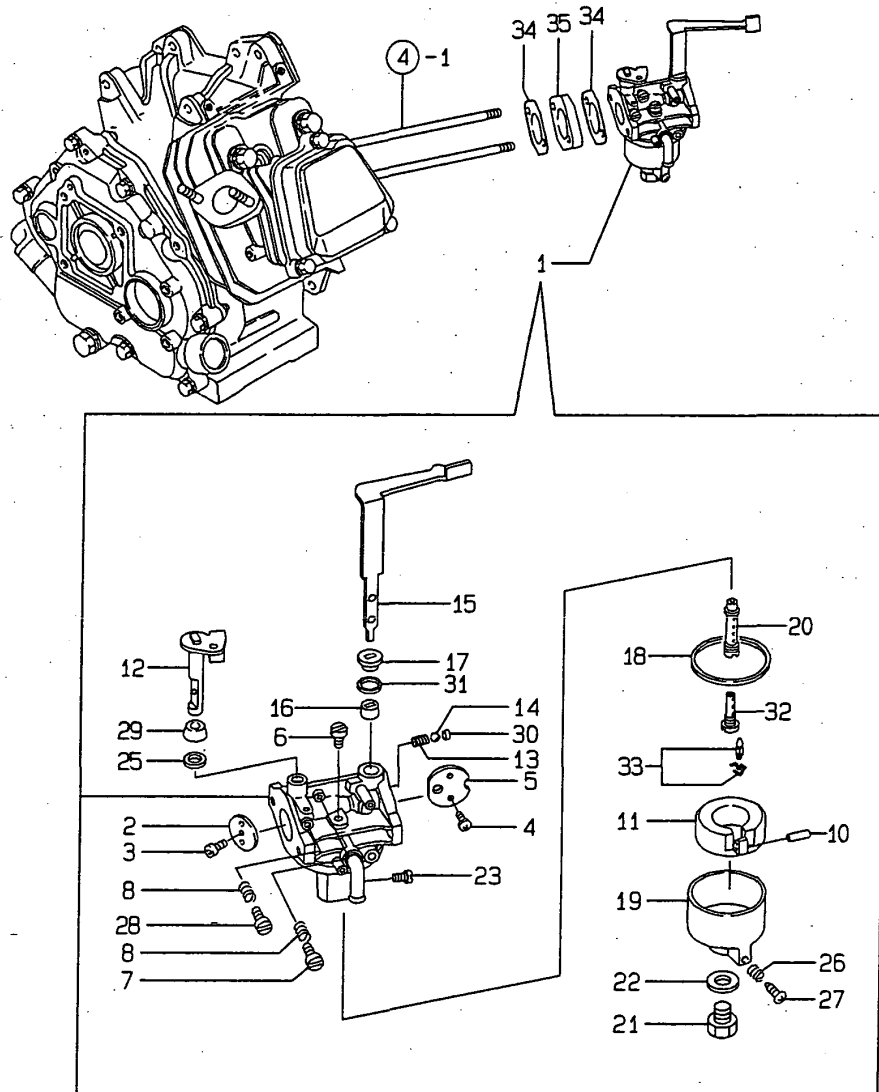
(C)=

(D)=

(E)=

(F)=

7. CARBURETOR



N132450

Remarks
 (1) REPAIR PART.
 (REMARKS)"EFFECTIVE MACHINE NO." OF
 ENGINE IS INDICATED ON THE
 ENGINE LABEL WHICH IS SHOWN
 IN FIG.9.

REF.	LEV.	PARTS NO.	DESCRIPTION	QTY						I	R
				(A)	(B)	(C)	(D)	(E)	(F)		
1	1	160697-56011	CARBURETOR ASSY	1							
2	2	160592-56540	VALVE, THROTTLE	1							
3	2	160690-56560	LEVER, CHOKE	1							
4	2	160690-56570	SCREW	2							
5	2	160590-56530	VALVE, CHOKE	1							
6	2	160492-56540	JET, PILOT	1							
7	2	160692-56710	SCREW	1							
8	2	181230-56380	SPRING	2							
10	2	160610-56630	PIN, FLOAT	1							
11	2	160697-56620	FLOAT ASSY	1							
12	2	160692-56640	SHAFT, THROTTLE	1							
13	2	160310-56980	SPRING, CHOKE	1							
14	2	160310-56990	BALL, STEEL	1							
15	2	160697-56650	LEVER, CHOKE	1							
16	2	160810-56580	RING, CHOKE SHAFT	1							
17	2	160810-56590	RING, CHOKE LEVER	1							
18	2	160610-56610	GASKET	1							
19	2	160769-56640	BODY, FLOAT CHAMBER	1							
20	2	160693-56570	NOZZLE, MAIN	1							
21	2	160769-56660	BOLT	1							
22	2	160610-56611	GASKET	1							
23	2	160693-56580	JET, MAIN	1							
25	2	160640-56850	SEAL	1							
26	2	181230-56380	SPRING	1							
27	2	160610-56900	SCREW	1							
28	2	160667-56750	SCREW, ADJUSTING	1							
29	2	160702-56720	RING	1							
30	2	160692-56700	SEAL, RUBBER	1							
31	2	160692-56800	SEAL, RUBBER	1							
32	2	160690-56751	NOZZLE	1							
33	1	160692-56560	VALVE, NEEDLE(RUBBER)	1							1
34	1	160610-56150	GASKET, CARBURETOR	2							
35	1	160690-56160	SPACER	1							

Fig.8. GOVERNOR & CONTROL DEVICE

OCNP3-G66000 8. GOVERNOR & CONTROL DEVICE

(A)=GA160E-SCSA

(B)=

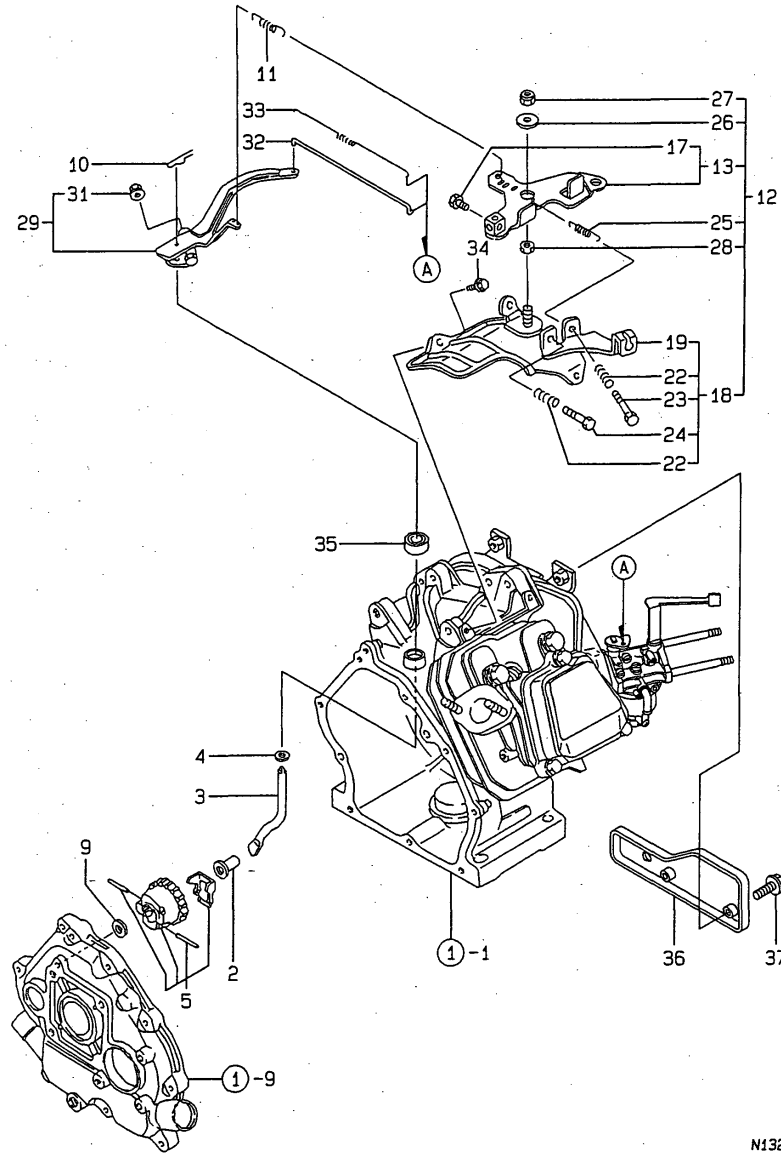
(C)=

(D)=

(E)=

(F)=

8. GOVERNOR & CONTROL DEVICE



N132451

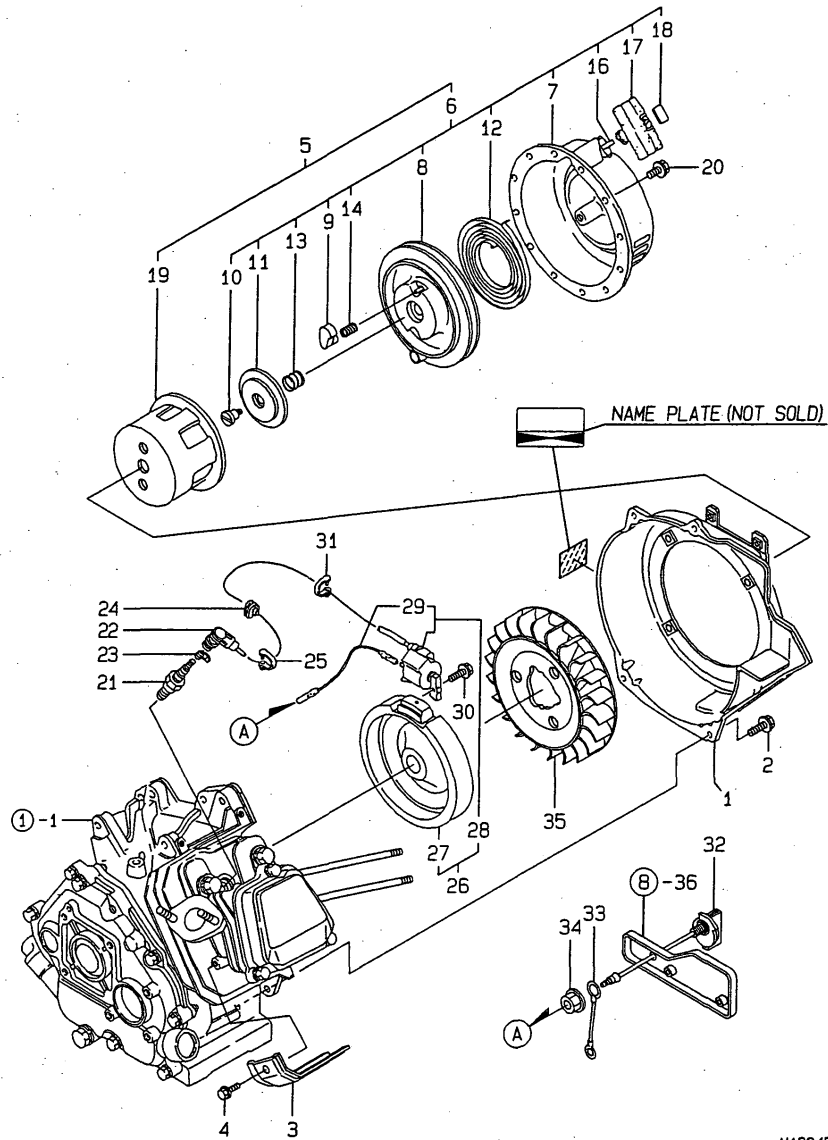
Remarks
 (REMARKS) "EFFECTIVE MACHINE NO." OF
 ENGINE IS INDICATED ON THE
 ENGINE LABEL WHICH IS SHOWN
 IN FIG.9.

N:Old $\begin{matrix} \leftarrow \text{Yes} \\ \text{No} \end{matrix}$ New, Q:Old $\begin{matrix} \leftarrow \text{No} \\ \text{Yes} \end{matrix}$ New, R:Old $\begin{matrix} \leftarrow \text{Yes} \\ \text{Yes} \end{matrix}$ New, S:Old $\begin{matrix} \leftarrow \text{No} \\ \text{No} \end{matrix}$ New, W:Add, Z:Discontinued, F:Interchangeable by set, K:Q'ty Change

REF.	LEV.	PARTS NO.	DESCRIPTION	QTY						I	R
				(A)	(B)	(C)	(D)	(E)	(F)		
2	1	160690-61301	SPINDLE, GOVERNOR	1							
3	1	160690-61311	SHAFT, GOV. LEVER	1							
4	1	160690-61450	WASHER	1							
5	1	160690-61600	GEAR ASSY, GOV.	1							
9	1	160120-76940	WASHER	1							
10	1	22372-080000	SNAP PIN (JASO 8)	1							
11	1	160690-66011	SPRING, GOVERNOR	1							
12	1	160692-66101	CONTROL ASSY	1							
13	2	160692-66051	LEVER ASSY, CONTROL	1							
17	3	26117-040088	BOLT M 4X 8 PLATED	1							
18	2	160690-66111	BASE ASSY, CONTROL	1							
19	3	160690-66143	BASE, CONTROL	1							
22	3	160520-66291	SPRING	2							
23	3	26117-040257	BOLT M 4X 25	1							
24	3	26117-040357	BOLT M 4X 35	1							
25	2	160664-66220	SPRING, RETURN	1							
26	2	160670-66350	COLLAR	1							
27	2	26347-060002	U-NUT M 6	1							
28	2	26757-060002	NUT M 6	1							
29	1	160690-66180	LEVER ASSY, GOVERNOR	1							
31	2	26366-060002	NUT M 6	1							
32	1	160690-66200	LINK, THROTTLE	1							
33	1	160690-66210	SPRING, TENSION	1							
34	1	26476-060142	BOLT M 6X 14,TAPPING	3							
35	1	114770-61600	SEAL, OIL	1							
36	1	160690-66310	PANEL	1							
37	1	26106-060162	BOLT M 6X 16 PLATED	2							

Fig.9. FLY.MAGNET & STARTING DEVICE

9. FLY.MAGNET & STARTING DEVICE



N132452

Remarks
 (REMARKS)"EFFECTIVE MACHINE NO." OF
 ENGINE IS INDICATED ON THE
 ENGINE LABEL WHICH IS SHOWN
 IN FIG.9.

OCNP3-G66000 9. FLY.MAGNET & STARTING DEVICE

(A)=GA160E-SCSA

(B)=

(C)=

(D)=

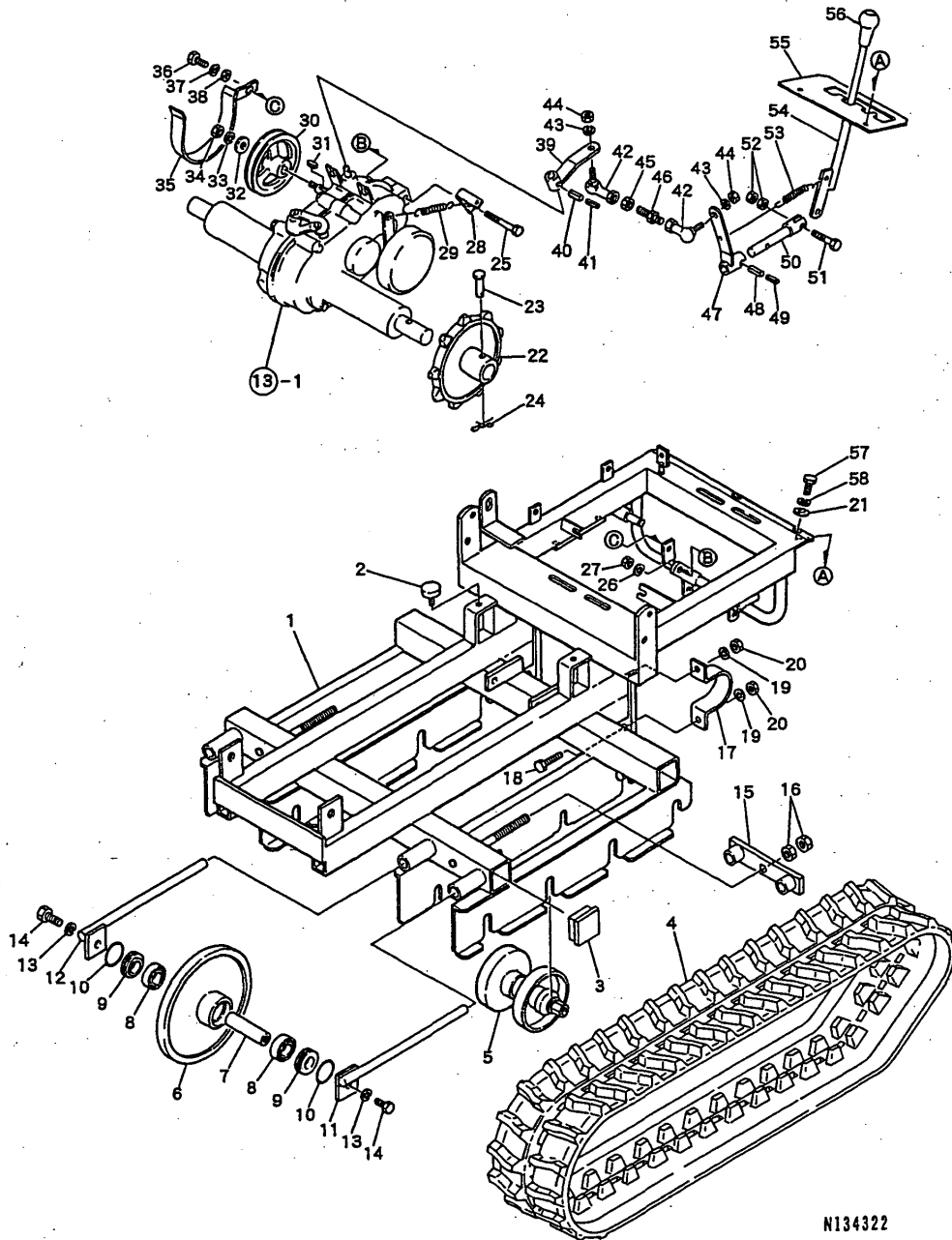
(E)=

(F)=

REF.	LEV.	PARTS NO.	DESCRIPTION	QTY						I	R
				(A)	(B)	(C)	(D)	(E)	(F)		
1	1	160698-45110	CASE,FAN (WHITE)(14)	1							
2	1	26476-060142	BOLT M 6X 14,TAPPING	4							
3	1	160699-45200	COVER, CYLINDER	1							
4	1	26476-060142	BOLT M 6X 14,TAPPING	1							
5	1	160690-76051	STARTER ASSY, RECOIL	1							
6	2	160690-76251	RECOIL ASSY	1							
7	3	160690-76511	CASE COMP.,STARTER	1							
8	3	160690-76521	REEL	1							
9	3	160690-76801	RATCHET	2							
10	3	160698-76580	SETSCREW	1							
11	3	160690-76531	GUIDE, RATCHET	1							
12	3	160690-76540	SPRING, SPIRAL	1							
13	3	160690-76561	SPRING, FRICTION	1							
14	3	160690-76570	SPRING, RETURN	2							
16	3	160690-76630	ROPE, STARTER	1							
17	3	160690-76620	KNOB, STARTER	1							
18	3	160690-76830	CAP, KNOB	1							
19	2	160690-76591	PULLEY, STARTER	1							
20	1	26106-060082	BOLT M 6X 8 PLATED	4							
21	1	160793-78010	PLUG, SPARK	1							
22	1	160700-78040	CAP, PLUG	1							
23	1	160700-78050	TERMINAL, PLUG	1							
24	1	160700-78720	GROMMET	1							
25	1	29610-000950	CLAMP, SPEED 095	1							
26	1	160690-78083	MAGNET ASSY, FLYWHEEL	1							
27	2	160690-78542	ROTOR	1							
28	2	160690-78532	IGNITER	1							
29	3	160690-78230	CORD, STOP	1							
30	1	26476-060302	BOLT M 6X 30,TAPPING	2							
31	1	29610-000650	CLAMP, SPEED 065	1							
32	1	160611-77250	SWITCH, STOP	1							
33	1	160495-77260	CODE	1							
34	1	26366-080002	NUT M 8	1							
35	1	160699-45010	FAN, COOLING	1							

Fig.10. FRAME

10. FRAME



N134322

(A)=T6350

(B)=

(C)=

(D)=

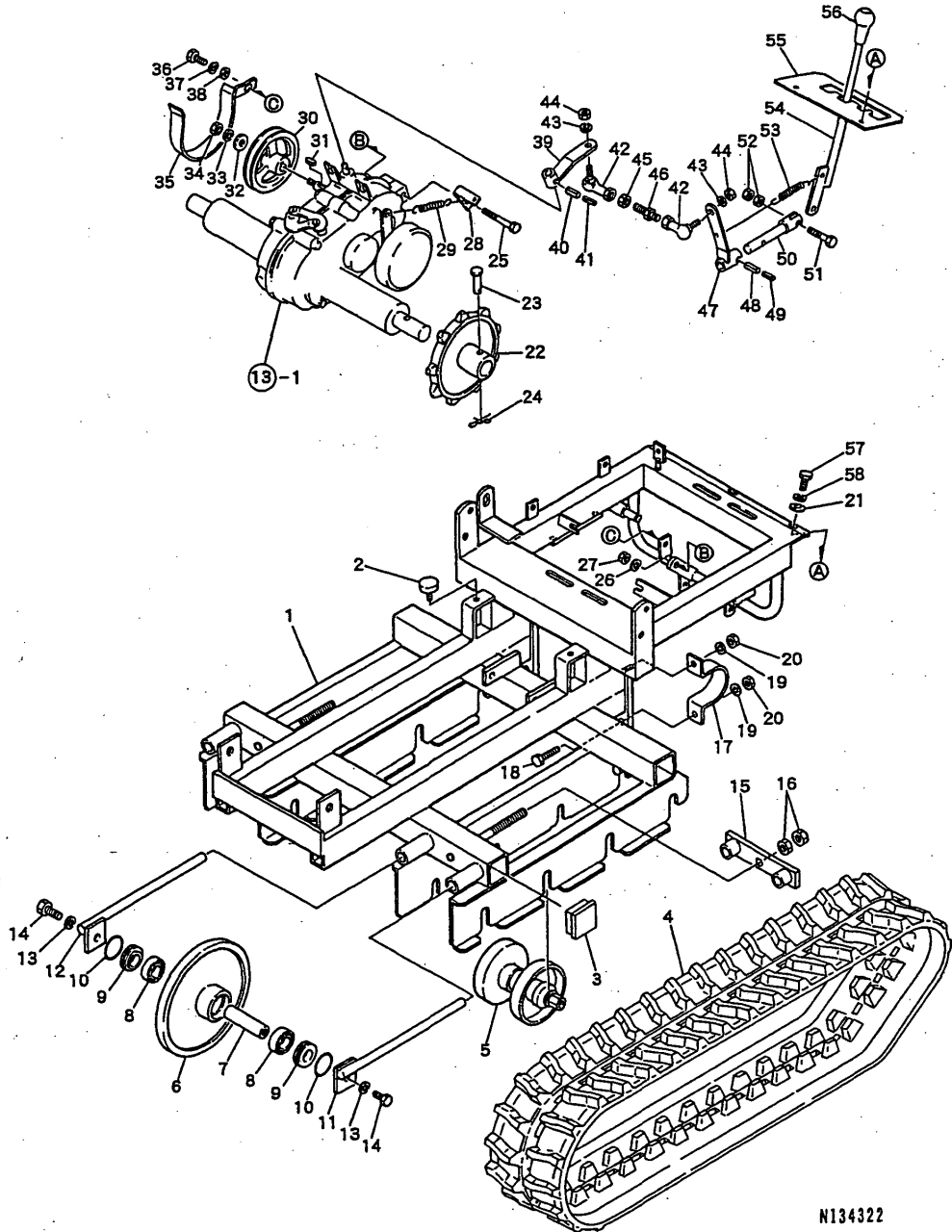
(E)=

(F)=

REF.	LEV.	PARTS NO.	DESCRIPTION	Q'TY						I	R
				(A)	(B)	(C)	(D)	(E)	(F)		
1	1	G46150020000	FLAME	1							
2	1	G46376512000	RUBBER,CUSSION	2							
3	1	G46796230010	CAP,RUBBER 50*50*2.3	4							
4	1	G46886030000	CRAWRER 180W*36L*60P	2							
5	1	G40850160100	TRUCK ROLLER 120 ASS	8							
6	1	G41410120000	ADLE,FRONT	2							
7	1	G48501081000	SHAFT,FRONT ADLE	2							
8	1	G4010146005A	BEARING 6005	4							
9	1	G46016511000	COLLAR,DUST	4							
10	1	G40052300450	O-RING G45	4							
11	1	G41500120100	ROD,TENSION(L)	2							
12	1	G41500120000	ROD,TENSION(R)	2							
13	1	G40027100012	WASHER M12	4							
14	1	G40010111225	BOLT M12*25(8T	4							
15	1	G41400120200	PLATE,TENSION	2							
16	1	G40020100016	NUT M16	4							
17	1	G46501230000	STAY,HOUSING	2							
18	1	G40012801235	BOLT M12*35	2							
19	1	G40027100012	WASHER M12	4							
20	1	G40020100012	NUT M12	4							
21	1	G40026100006	WASHER M6	2							
22	1	G41520120000	SPROCKET	2							
23	1	G40031311055	PIN 10*60	2							
24	1	G40031199010	PIN,STOPPPER 10	2							
25	1	G40010101070	BOLT M10*70	1							
26	1	G40027100010	WASHER M10	1							
27	1	G40020100010	NUT M10	1							
28	1	G41500121200	HUNGER,SPRING	1							
29	1	G46062104020	SPRING	1							
30	1	G41500120200	PULLEY	1							
31	1	G40300000018	KEY 5*5*25	1							
32	1	G47082200000	WASHER 30*11*3.2	1							
33	1	G40027100010	WASHER M10	1							
34	1	G40020100010	NUT M10	1							
35	1	G41500120400	STOPPER,BELT	1							
36	1	G40010100816	BOLT M6*16	1							
37	1	G40027100008	WASHER M8	1							
38	1	G40026100008	WASHER M8	1							
39	1	G41500120500	ARM,LINK	1							
40	1	G40030300525	PIN,SPRING 5*25	1							
41	1	G40030300325	PIN,SPRING 3*25	1							
42	1	G47876410000	BALL,RING(BL8D	2							
43	1	G40027100008	WASHER M8	2							
44	1	G40020100008	NUT M8	2							
45	1	G40020100008	NUT M8	1							
46	1	G41500120600	ROD	1							
47	1	G41500121100	ARM,LINK B	1							
48	1	G40030300525	PIN,SPRING 5*25	1							
49	1	G40030300325	PIN,SPRING 3*25	1							
50	1	G41500120800	SHAFT,SHIFT LEVER	1							
51	1	G40010110635	BOLT M6*35(8T	1							

Fig.10. FRAME

10. FRAME



OCNP3-G66000 10. FRAME

(A)=T6350

(B)=

(C)=

(D)=

(E)=

(F)=

REF.	LEV.	PARTS NO.	DESCRIPTION	QTY						I	R
				(A)	(B)	(C)	(D)	(E)	(F)		
52	1	G40020100006	NUT M6	2							
53	1	G46062104000	SPRING	1							
54	1	G41500120300	LEVER,SHIFT	1							
55	1	G41500120900	GUIDE,SHIFT	1							
56	1	G46066030030	GRIP 12(BLACK	1							
57	1	G40010100616	BOLT M6*16	2							
58	1	G40027100006	WASHER M6	2							

N134322

N:Old $\xrightarrow{\text{Yes}}$ New, Q:Old $\xrightarrow{\text{No}}$ New, R:Old $\xrightarrow{\text{Yes}}$ New, S:Old $\xrightarrow{\text{No}}$ New, W:Add, Z:Discontinued, F:Interchangeable by set, K:Q'ty Change

(C)Copy Rights YANMAR CO.,LTD.

Fig.11. CONTROL SECTION

(A)=T6350

(B)=

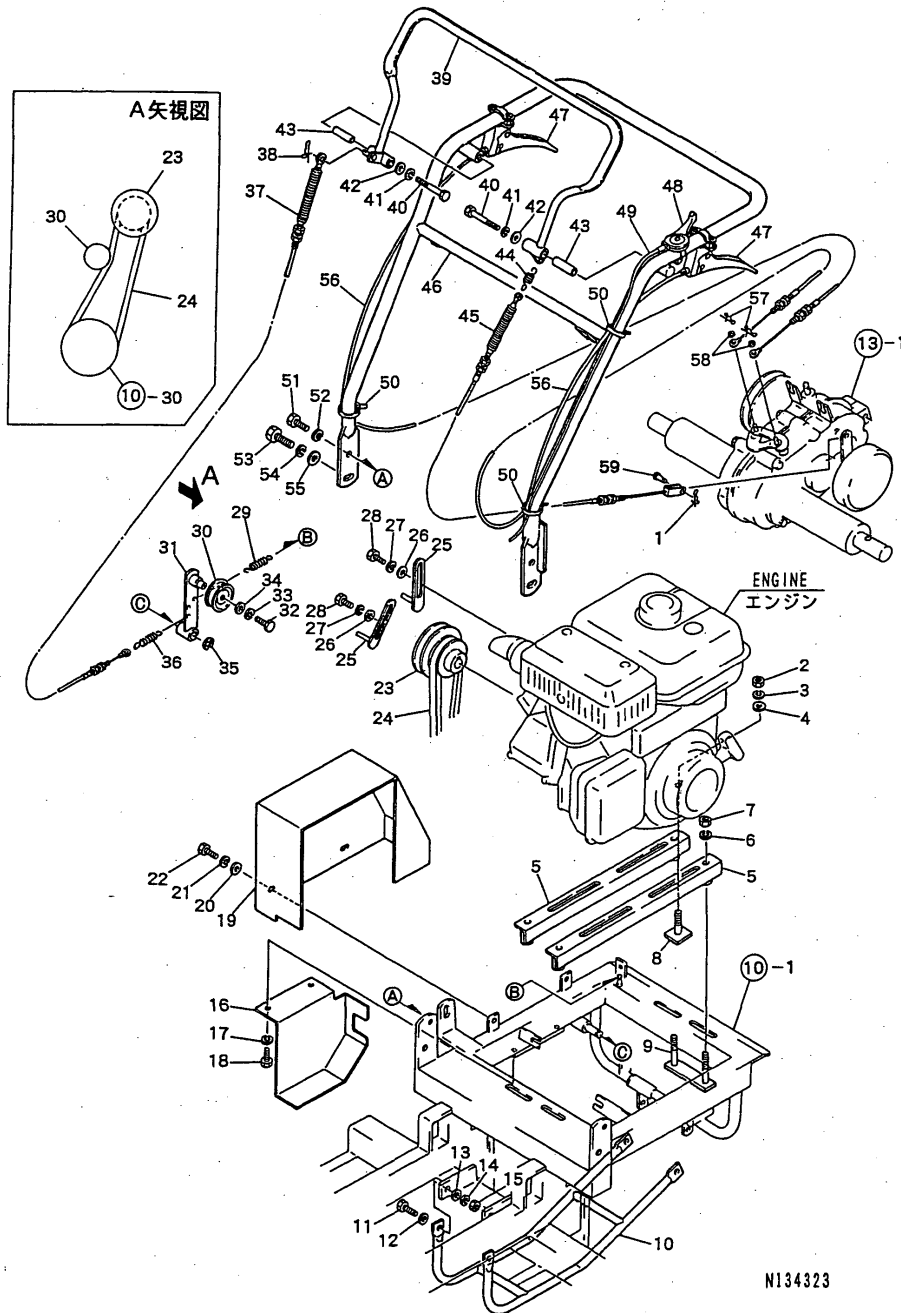
(C)=

(D)=

(E)=

(F)=

11. CONTROL SECTION



REF.	LEV.	PARTS NO.	DESCRIPTION	QTY						I	R
				(A)	(B)	(C)	(D)	(E)	(F)		
1	1	G40031199006	PIN 6,STPRD.STRAIGHT	1							
2	1	G40020100008	NUT M8	4							
3	1	G40027100008	WASHER M8	4							
4	1	G40026100008	WASHER M8	4							
5	1	G41502220000	BASE,ENGINE	2							
6	1	G40027100010	WASHER M10	4							
7	1	G40020100010	NUT M10	4							
8	1	G46462076010	BOLT,ENGINE STAY	4							
9	1	G41502220100	BOLT,BASE STAY	2							
10	1	G41501020300	PROTECTOR	1							
11	1	G40100000015	BOLT M8*25	4							
12	1	G40026100008	WASHER M8	4							
13	1	G40026100008	WASHER M8	4							
14	1	G40027100008	WASHER M8	4							
15	1	G40020100008	NUT M8	4							
16	1	G41501120000	COVER,PULLEY	1							
17	1	G40027100008	WASHER M8	2							
18	1	G40010100814	BOLT M8*14	2							
19	1	G41521120000	COVER,BELT	1							
20	1	G40026100008	WASHER M8	3							
21	1	G40027100008	WASHER M8	3							
22	1	G40010100816	BOLT M6*16	3							
23	1	G41502220201	PULLEY,ENGINE	1							
24	1	G40080300032	V-BELT B32	1							
25	1	G47212370020	STOPPER,BELT	2							
26	1	G40026100008	WASHER M8	2							
27	1	G40027100008	WASHER M8	2							
28	1	G40010100816	BOLT M6*16	2							
29	1	G46492100000	SPRING	1							
30	1	G46066110000	PULLEY,TENSION	1							
31	1	G41506020000	ARM,TRACKSION TENSIO	1							
32	1	G40010100612	BOLT M6*12	1							
33	1	G40027100006	WASHER M6	1							
34	1	G46066070000	WASHER 16*7*1.6	1							
35	1	G40036800012	RING,STOP E12	1							
36	1	G46172105000	SPRING	1							
37	1	G46496040600	WIRING	1							
38	1	G40031199006	PIN 6,STPRD.STRAIGHT	1							
39	1	G41526020000	LEVER,TRACTION	1							
40	1	G40010100865	BOLT M8*65	2							
41	1	G40027100008	WASHER M8	2							
42	1	G47022200010	WASHER 22*9*1.6	2							
43	1	G41416020200	COLLAR	2							
44	1	G46172105000	SPRING	1							
45	1	G41526060000	WIRE,BRAKE	1							
46	1	G41416020000	HANDLE	1							
47	1	G46496130000	LEVER,SIDE CLUTCH	2							
48	1	G46666132000	LEVER,SROTLE	1							
49	1	G46066043000	WIRING	1							
50	1	G40329060000	CLAMP,WIRE	5							
51	1	G40010101025	BOLT M10*25	2							

Fig.11. CONTROL SECTION

(A)=T6350

(B)=

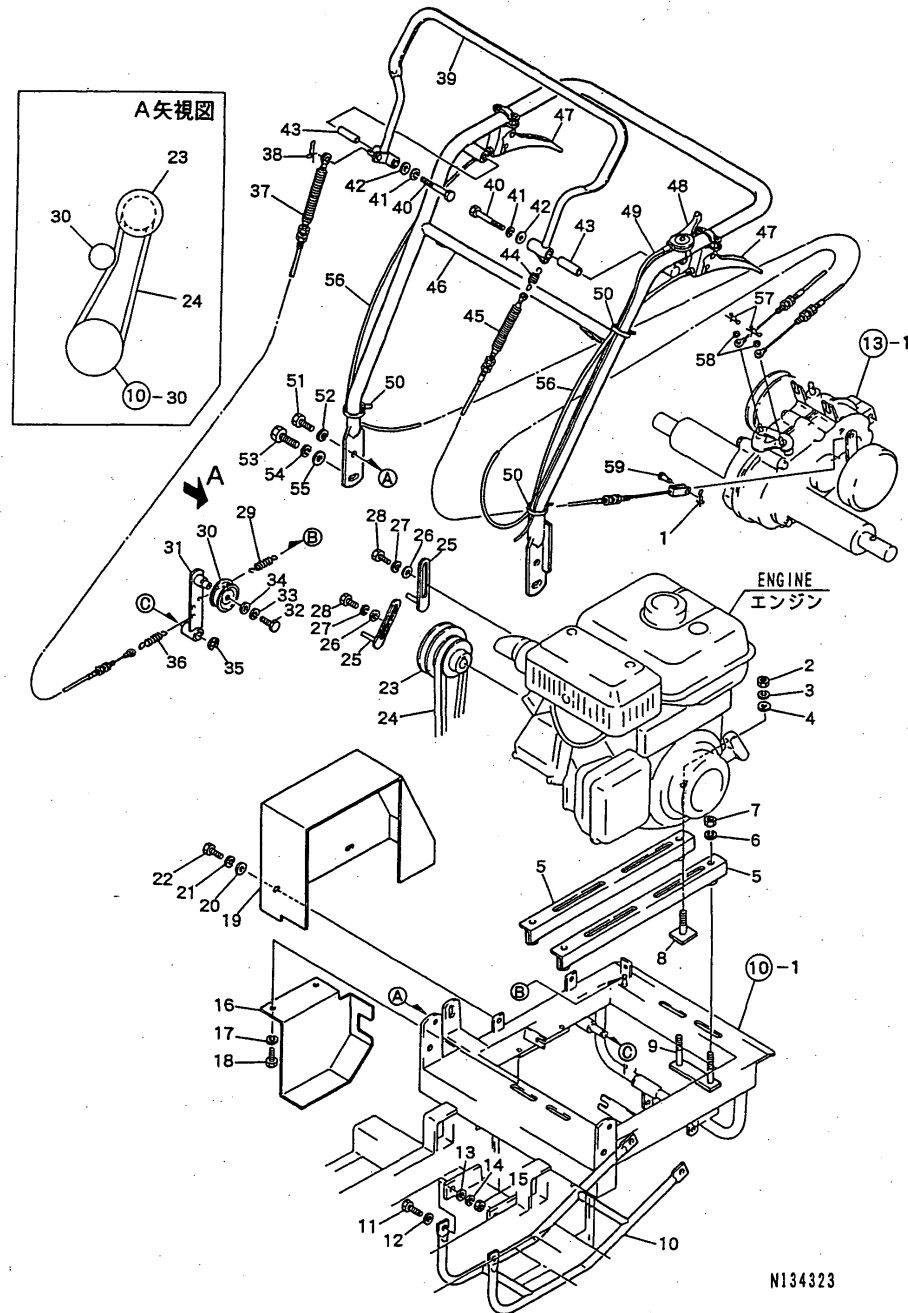
(C)=

(D)=

(E)=

(F)=

11. CONTROL SECTION

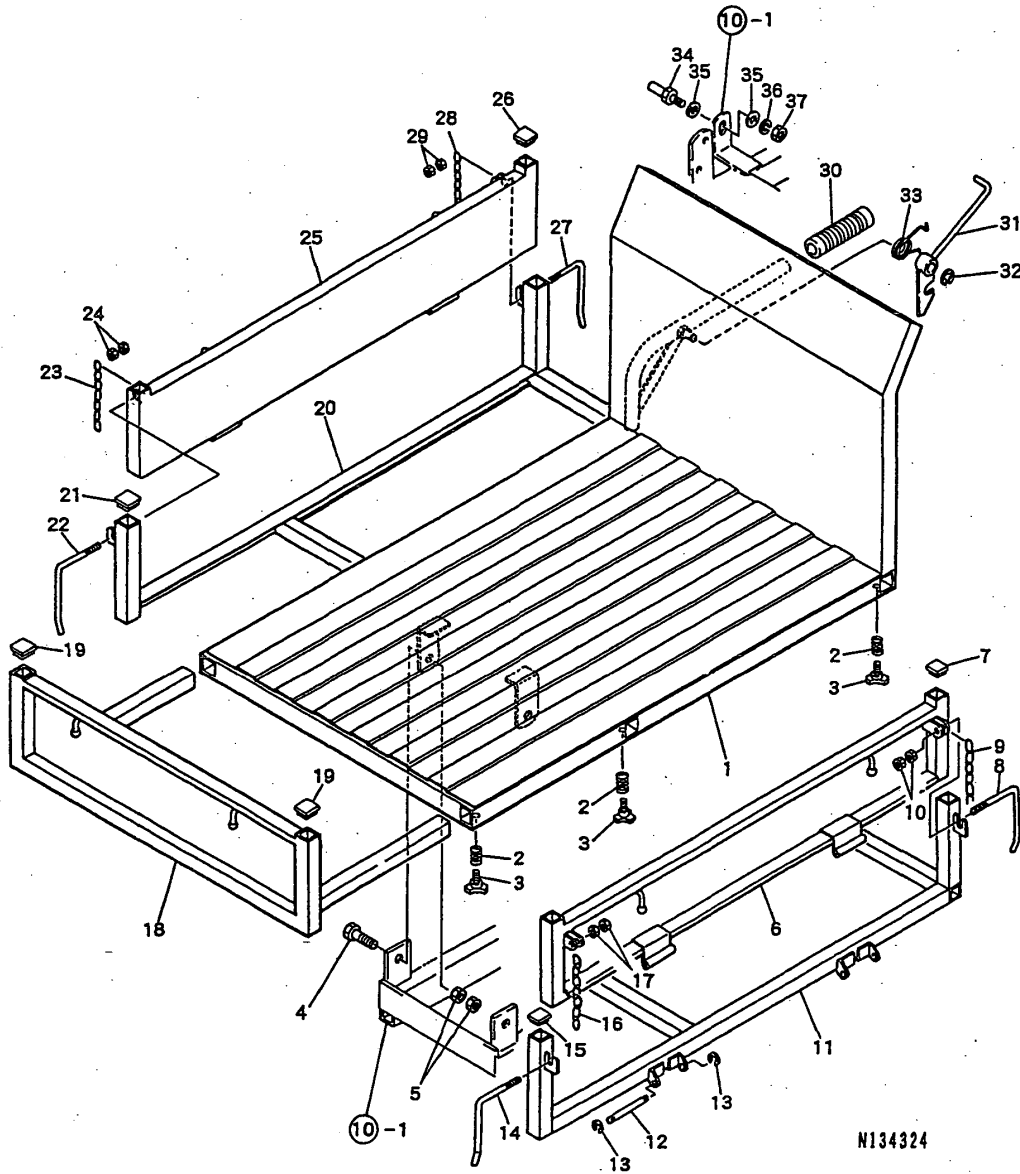


REF.	LEV.	PARTS NO.	DESCRIPTION	QTY						I	R
				(A)	(B)	(C)	(D)	(E)	(F)		
52	1	G40027100010	WASHER M10	2							
53	1	G40010101225	BOLT M12*25	2							
54	1	G40027100012	WASHER M12	2							
55	1	G40026100012	WASHER M12	2							
56	1	G41506060201	WIRE,SIDE CLUTCH	2							
57	1	G40031199006	PIN 6,STPRD.STRAIGHT	2							
58	1	G40026100006	WASHER M6	2							
59	1	G46066080000	PIN,6*19	1							

N134323

Fig.12. PLATFORM CARRIER

12. PLATFORM CARRIER



N134324

(A)=T6350

(B)=

(C)=

(D)=

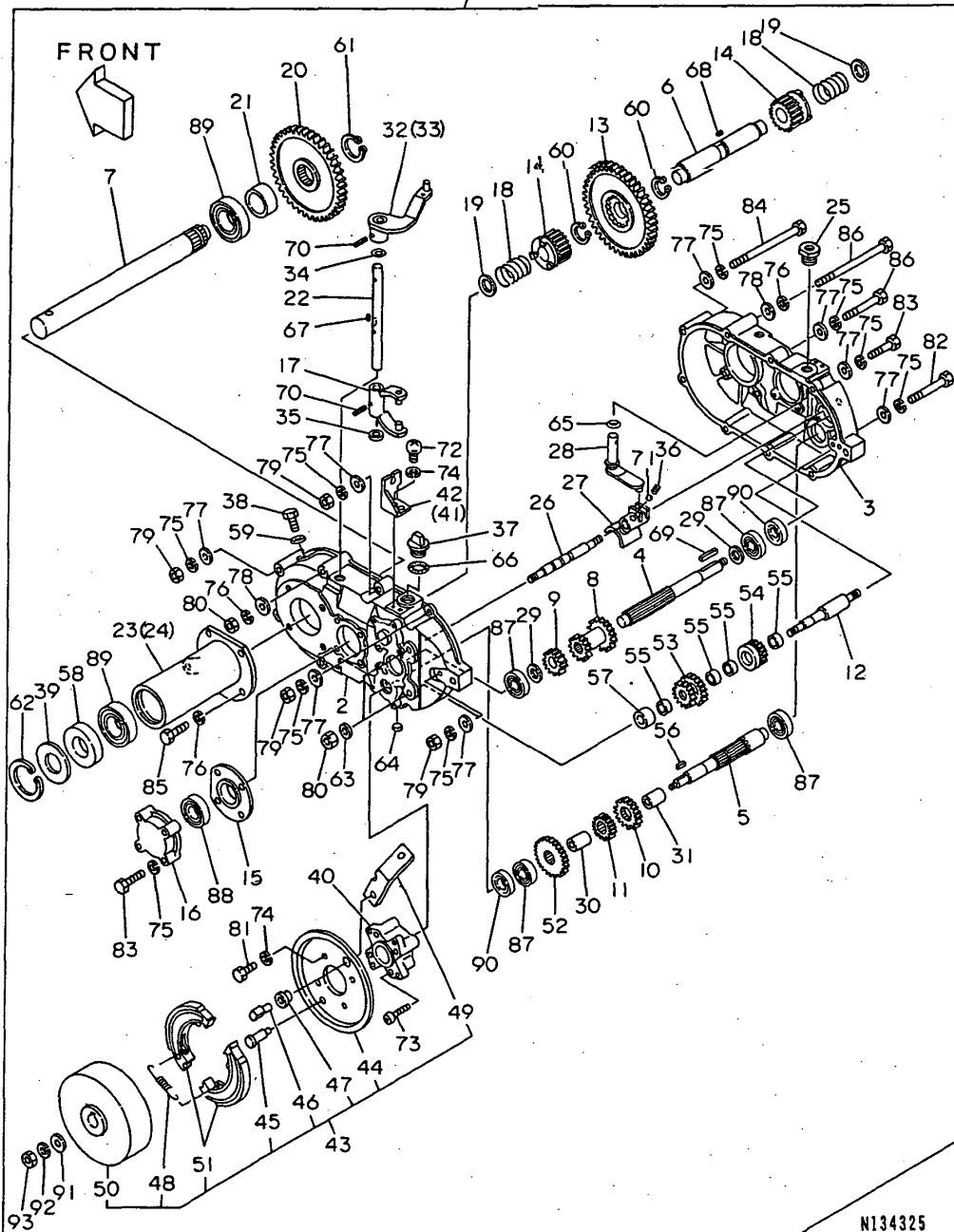
(E)=

(F)=

REF.	LEV.	PARTS NO.	DESCRIPTION	QTY						I	R
				(A)	(B)	(C)	(D)	(E)	(F)		
1	1	G41525220000	PALETTE	1							
2	1	G40905220400	SPRING	6							
3	1	G40905260000	BOLT M8*20	6							
4	1	G40010111445	BOLT M14*45(8T)	2							
5	1	G40020100014	NUT M14	4							
6	1	G41525220100	DOOR,SIDE	1							
7	1	G40725260000	CAP 25*25*1.6	2							
8	1	G46062392010	HOOK,SIDE DOOR	1							
9	1	G46066140000	CHAIN	1							
10	1	G40020100010	NUT M10	2							
11	1	G41215220200	FRAME,SIDE DOOR(L)	1							
12	1	G40855220400	PIN	4							
13	1	G40036800006	RING,STOP E6	8							
14	1	G46062392000	HOOK,SIDE DOOR	1							
15	1	G40725260000	CAP 25*25*1.6	3							
16	1	G46066140000	CHAIN	1							
17	1	G40020100010	NUT M10	2							
18	1	G41525220200	DOOR,FRONT	1							
19	1	G40725260000	CAP 25*25*1.6	2							
20	1	G41215220100	FRAME,SIDE DOOR(R)	1							
21	1	G40725260000	CAP 25*25*1.6	3							
22	1	G46062392010	HOOK,SIDE DOOR	1							
23	1	G46066140000	CHAIN	1							
24	1	G40020100010	NUT M10	2							
25	1	G41525220100	DOOR,SIDE	1							
26	1	G40725260000	CAP 25*25*1.6	2							
27	1	G46062392000	HOOK,SIDE DOOR	1							
28	1	G46066140000	CHAIN	1							
29	1	G40020100010	NUT M10	2							
30	1	G47276030000	GLIP25.4(BK)	1							
31	1	G46062393000	LEVER,DUMP HOOK	1							
32	1	G40036800012	RING,STOP E12	1							
33	1	G46062104040	SPRING	1							
34	1	G46062070010	BOLT,DUMP HOOK	1							
35	1	G40026100012	WASHER M12	2							
36	1	G40027100012	WASHER M12	1							
37	1	G40020100012	NUT M12	1							

Fig.13. TRANSMISSION

13. TRANSMISSION



N134325

(A)=T6350

(B)=

(C)=

(D)=

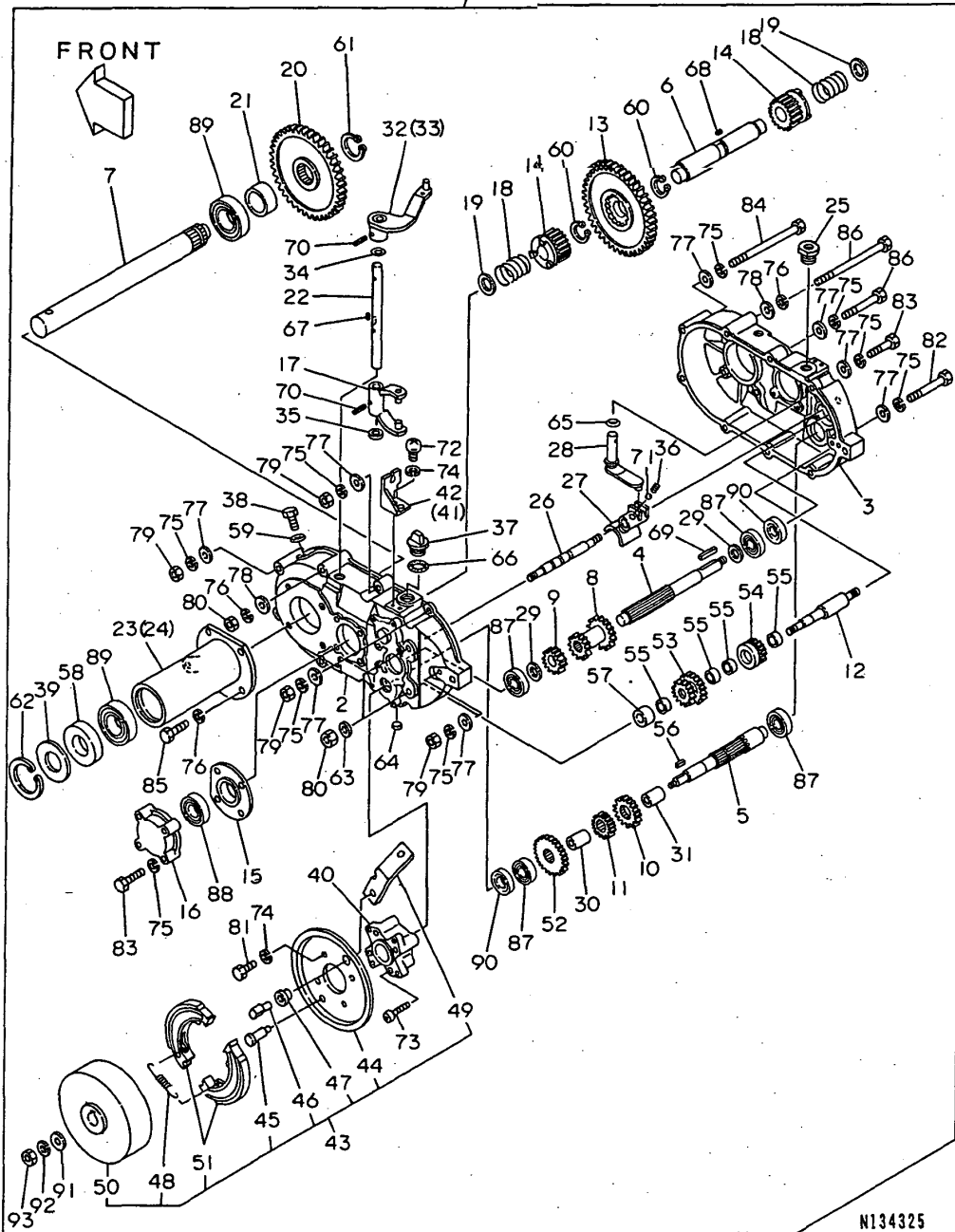
(E)=

(F)=

REF.	LEV.	PARTS NO.	DESCRIPTION	QTY						I	R
				(A)	(B)	(C)	(D)	(E)	(F)		
1	1	G41500160100	MISSION,TRANS ASSY	1							
2	2	G46150016700	CASE,MISSION(L	1							
3	2	G46150016701	CASE,MISSION(R	1							
4	2	G46150016702	SHAFT,IMPUL	1							
5	2	G46150016703	SHAFT,BRAKE	1							
6	2	G46150016704	SHAFT,CLUTCH	1							
7	2	G46150016705	SHAFT,DRIVE	2							
8	2	G46150016706	GEAR,SLIDE 14/19	1							
9	2	G46150016707	GEAR,TOP 24T	1							
10	2	G46150016708	GEAR,LOW 25T	1							
11	2	G46150016709	GEAR 20T	1							
12	2	G46150016710	SHAFT,REVERSE	1							
13	2	G46150016711	GEAR,CLUTCH	1							
14	2	G46150016712	GEAR,SIDE CLUTCH	2							
15	2	G46150016713	METAL,CLUTCH	2							
16	2	G46150016714	COVER,BEARING	2							
17	2	G46150016715	SHIFTER,GEAR	2							
18	2	G46150016716	SPRING,CLUTCH	2							
19	2	G46150016717	COLLAR	2							
20	2	G46150016718	GEAR,DRIVE SHAFT	2							
21	2	G46150016719	COLLAR	2							
22	2	G46150016720	ROD,CLUTCH	2							
23	2	G46150016721	HOLDER,DRIVE SHAFT(L	1							
24	2	G46150016722	HOLDER,DRIVE SHAFT(R	1							
25	2	G46150016723	GUIDE,SHIFT LEVER	1							
26	2	G46150016724	ROD,SHIFTER	1							
27	2	G46150016725	SHIFTER,GEAR A	1							
28	2	G46150016726	LEVER,SHIFT 12	1							
29	2	G46150016727	COLLAR	2							
30	2	G46150016728	COLLAR 12	1							
31	2	G46150016729	COLLAR 15	1							
32	2	G46150016730	LEVER,CLUTCH(L	1							
33	2	G46150016731	LEVER,CLUTCH(R	1							
34	2	G46150016732	O-RING,CLUTCH ROD	2							
35	2	G46150016733	PLUG,CLUTCH ROD	2							
36	2	G46150016734	SPRING,SHIFT FORK	1							
37	2	G46150016735	PLUG,FUEL	1							
38	2	G46150016736	PLUG,SLUSH	1							
39	2	G46150016737	COVER,OIL SEAL	2							
40	2	G46150016738	HOLDER,BRAKE	1							
41	2	G46150016739	FITTING,WIRE STOP(L	1							
42	2	G46150016740	FITTING,WIRE STOP(R	1							
43	2	G46150016741	BRAKE ASSY	1							
44	3	G46150016756	BRAKE COVER	1							
45	3	G46150016757	BRAKE SHOE PIN	1							
46	3	G46150016758	BRAKE CAM	1							
47	3	G46150016751	BUSH	1							
48	3	G46150016752	SPRING	2							
49	3	G46150016753	BRAKE LEVER	1							
50	3	G46150016754	DRUM,BRAKE	1							
51	3	G46150016755	SHUE	2							

Fig.13. TRANSMISSION

13. TRANSMISSION



N134325

(A)=T6350

(B)=

(C)=

(D)=

(E)=

(F)=

REF.	LEV.	PARTS NO.	DESCRIPTION	QTY						I	R
				(A)	(B)	(C)	(D)	(E)	(F)		
52	2	G46150016742	GEAR 17T	1							
53	2	G46150016743	GEAR,REVERSE 15/20	1							
54	2	G46150016744	GEAR,REVERSE 14T	1							
55	2	G46150016745	BUSHING	4							
56	2	G40300000525	KEY 5*5*25	1							
57	2	G46150016747	COLLAR,REVERSE SHAFT	1							
58	2	G46150016748	OIL SEAL TC305512	2							
59	2	G40025100010	WASHER 10	1							
60	2	G40036100023	RING,STOP S23	2							
61	2	G40036100030	RING,STOP S30	2							
62	2	G46150016749	RETAINING RING H55	2							
63	2	G40025100010	WASHER 10	4							
64	2	G46150016750	SEAL CAP 32	1							
65	2	G40052100140	O-RING P14	1							
66	2	G40052100180	O-RING P18	1							
67	2	G40300004410	KEY 4*4*10	2							
68	2	G40300005510	KEY 5*5*10	1							
69	2	G40300000018	KEY 5*5*25	1							
70	2	G40030300422	PIN,SPRING 4*22	4							
71	2	G40048109998	BALL,IRON 8	1							
72	2	G40010700614	BOLT M6*14	4							
73	2	G40100000013	BOLT M6*45	4							
74	2	G40027100006	WASHER M6	8							
75	2	G40027100008	WASHER M8	20							
76	2	G40027100010	WASHER M10	10							
77	2	G40026100008	WASHER M8	12							
78	2	G40026100010	WASHER M10	9							
79	2	G40020100008	NUT M8	7							
80	2	G40020100010	NUT M10	6							
81	2	G40010100815	BOLT M8*15	4							
82	2	G40010100860	BOLT M8*60	3							
83	2	G40100000022	BOLT M8*35	10							
84	2	G40101008110	BOLT M8*110	2							
85	2	G40100000028	BOLT M10*30	8							
86	2	G40101010120	BOLT M10*120	2							
87	2	G40040106003	BEARING,BALL6003	4							
88	2	G40040106004	BEARING,BALL6004	2							
89	2	G40040106006	BEARING,BALL6006	4							
90	2	G40600173207	OIL SEAL TC173207	2							
91	2	G40026100010	WASHER M10	1							
92	2	G40027100010	WASHER M10	1							
93	2	G40020100010	NUT M10	1							

N:Old $\begin{matrix} \leftarrow \text{Yes} \\ \text{No} \end{matrix}$ New, Q:Old $\begin{matrix} \leftarrow \text{No} \\ \text{Yes} \end{matrix}$ New, R:Old $\begin{matrix} \leftarrow \text{Yes} \\ \text{Yes} \end{matrix}$ New, S:Old $\begin{matrix} \leftarrow \text{No} \\ \text{No} \end{matrix}$ New, W:Add, Z:Discontinued, F:Interchangeable by set, K:Q'ty Change

Part Number Index

All parts are stipulated in the order of part numbers.

(Depending on the area in which the part is used.)

This index will display the location of the part according to each part number.

PARTS No. INDEX

PARTS No.	Fig.	Ref.No.
104200-59170	1	8
106990-44660	6	24
114250-14400	5	12
114250-45310	6	1
114252-13800	4	15
114252-13910	4	16
114252-13950	4	19
114252-13960	4	17
114270-01600	1	4
114299-01760	1	15
114299-01950	1	17
114770-61600	8	35
124060-77680	6	27
160110-92610	3	7
160110-92710	3	9
160120-76940	8	9
160120-92700	3	8
160310-14550	5	32
160310-56980	7	13
160310-56990	7	14
160393-55050	6	11
160490-14200	5	11
160492-56540	7	6
160493-12550	4	6
160495-77260	9	33
160520-07272	3	4
160520-66291	8	22
160590-21210	5	21
160590-56530	7	5
160592-56540	7	2
160610-01690	1	7
160610-04201	2	1
160610-04570	4	1
160610-04910	5	16
160610-55100	6	12
160610-56150	4	7
	7	34
160610-56610	7	18
160610-56611	7	22
160610-56630	7	10
160610-56900	7	27
160611-77250	9	32
160640-56850	7	25
160664-07370	3	5
160664-66220	8	25
160667-56750	7	28
160670-66350	8	26
160690-01330	2	22
160690-02220	1	5
		12

PARTS No.	Fig.	Ref.No.
160690-03050	2	20
160690-11010	2	2
160690-11100	2	6
160690-11110	2	7
160690-11120	2	8
160690-11180	2	9
160690-11200	2	10
160690-11221	2	11
160690-11271	2	12
160690-11280	2	13
160690-11290	2	14
160690-11300	2	16
160690-11310	2	17
160690-12510	4	3
160690-12530	4	4
160690-12600	4	2
160690-13200	4	9
160690-13500	4	12
160690-13530	4	13
160690-13550	4	10
160690-13600	4	11
160690-13900	4	18
160690-14051	5	1
160690-14571	5	9
160690-21201	5	20
160690-22011	5	24
160690-22300	5	30
160690-55140	6	15
160690-55461	6	14
160690-56160	7	35
160690-56560	7	3
160690-56570	7	4
160690-56751	7	32
160690-61301	8	2
160690-61311	8	3
160690-61450	8	4
160690-61600	8	5
160690-66011	8	11
160690-66111	8	18
160690-66143	8	19
160690-66180	8	29
160690-66200	8	32
160690-66210	8	33
160690-66310	8	36
160690-76051	9	5
160690-76251	9	6
160690-76511	9	7
160690-76521	9	8
160690-76531	9	11
160690-76540	9	12

PARTS No.	Fig.	Ref.No.
160690-76561	9	13
160690-76570	9	14
160690-76591	9	19
160690-76620	9	17
160690-76630	9	16
160690-76801	9	9
160690-76830	9	18
160690-78083	9	26
160690-78230	9	29
160690-78532	9	28
160690-78542	9	27
160692-55300	6	16
160692-56560	7	33
160692-56640	7	12
160692-56700	7	30
160692-56710	7	7
160692-56800	7	31
160692-66051	8	13
160692-66101	8	12
160693-56570	7	20
160693-56580	7	23
160697-56011	7	1
160697-56620	7	11
160697-56650	7	15
160698-45110	9	1
160698-76580	9	10
160699-45010	9	35
160699-45200	9	3
160700-78040	9	22
160700-78050	9	23
160700-78720	9	24
160702-56720	7	29
160710-55061	6	4
160710-55360	6	19
160710-55370	6	20
160710-55382	6	21
160710-55390	6	22
160710-78710	6	28
160760-12530	4	5
160762-55150	6	13
160769-56640	7	19
160769-56660	7	21
160793-78010	9	21
160802-59370	6	25
160810-03180	2	21
160810-56580	7	16
160810-56590	7	17
160820-59390	6	26
160991-07260	3	6
181230-56380	7	8

PARTS No.	Fig.	Ref.No.
181230-56380	7	26
760690-01510	1	9
760690-01561	1	1
760690-21702	5	17
760690-22501	5	26
760690-23700	5	13
760690-55710	6	2
G40010100612	11	32
G40010100616	10	57
G40010100814	11	18
G40010100815	13	81
G40010100816	10	36
	11	22
		28
G40010100860	13	82
G40010100865	11	40
G40010101025	11	51
G40010101070	10	25
G40010101225	11	53
G40010110635	10	51
G40010111225	10	14
G40010111445	12	4
G40010700614	13	72
G40012801235	10	18
G40020100006	10	52
G40020100008	10	44
		45
	11	2
		15
	13	79
G40020100010	10	27
		34
	11	7
	12	10
		17
		24
		29
	13	80
		93
G40020100012	10	20
	12	37
G40020100014	12	5
G40020100016	10	16
G40025100010	13	59
		63
G40026100006	10	21
	11	58
G40026100008	10	38
	11	4
		12

PARTS No. INDEX

PARTS No.	Fig.	Ref.No.
G40026100008	11	13
		20
		26
	13	77
G40026100010	13	78
		91
G40026100012	11	55
	12	35
G40027100006	10	58
	11	33
	13	74
G40027100008	10	37
		43
	11	3
		14
		17
		21
		27
		41
	13	75
G40027100010	10	26
		33
	11	6
		52
	13	76
		92
G40027100012	10	13
		19
	11	54
	12	36
G40030300325	10	41
		49
G40030300422	13	70
G40030300525	10	40
		48
G40031199006	11	1
		38
		57
G40031199010	10	24
G40031311055	10	23
G40036100023	13	60
G40036100030	13	61
G40036800006	12	13
G40036800012	11	35
	12	32
G40040106003	13	87
G40040106004	13	88
G40040106006	13	89
G40048109998	13	71
G40052100140	13	65

PARTS No.	Fig.	Ref.No.
G40052100180	13	66
G40052300450	10	10
G40080300032	11	24
G40100000013	13	73
G40100000015	11	11
G40100000022	13	83
G40100000028	13	85
G40101008110	13	84
G40101010120	13	86
G4010146005A	10	8
G40300000018	10	31
	13	69
G40300000525	13	56
G40300004410	13	67
G40300005510	13	68
G40329060000	11	50
G40600173207	13	90
G40725260000	12	7
		15
		19
		21
		26
G40850160100	10	5
G40855220400	12	12
G40905220400	12	2
G40905260000	12	3
G41215220100	12	20
G41215220200	12	11
G41400120200	10	15
G41410120000	10	6
G41416020000	11	46
G41416020200	11	43
G41500120000	10	12
G41500120100	10	11
G41500120200	10	30
G41500120300	10	54
G41500120400	10	35
G41500120500	10	39
G41500120600	10	46
G41500120800	10	50
G41500120900	10	55
G41500121100	10	47
G41500121200	10	28
G41500160100	13	1
G41501020300	11	10
G41501120000	11	16
G41502220000	11	5
G41502220100	11	9
G41502220201	11	23
G41506020000	11	31

PARTS No.	Fig.	Ref.No.
G41506060201	11	56
G41520120000	10	22
G41521120000	11	19
G41525220000	12	1
G41525220100	12	6
		25
G41525220200	12	18
G41526020000	11	39
G41526060000	11	45
G46016511000	10	9
G46062070010	12	34
G46062104000	10	53
G46062104020	10	29
G46062104040	12	33
G46062392000	12	14
		27
G46062392010	12	8
		22
G46062393000	12	31
G46066030030	10	56
G46066043000	11	49
G46066070000	11	34
G46066080000	11	59
G46066110000	11	30
G46066140000	12	9
		16
		23
		28
G46150016700	13	2
G46150016701	13	3
G46150016702	13	4
G46150016703	13	5
G46150016704	13	6
G46150016705	13	7
G46150016706	13	8
G46150016707	13	9
G46150016708	13	10
G46150016709	13	11
G46150016710	13	12
G46150016711	13	13
G46150016712	13	14
G46150016713	13	15
G46150016714	13	16
G46150016715	13	17
G46150016716	13	18
G46150016717	13	19
G46150016718	13	20
G46150016719	13	21
G46150016720	13	22
G46150016721	13	23

PARTS No.	Fig.	Ref.No.
G46150016722	13	24
G46150016723	13	25
G46150016724	13	26
G46150016725	13	27
G46150016726	13	28
G46150016727	13	29
G46150016728	13	30
G46150016729	13	31
G46150016730	13	32
G46150016731	13	33
G46150016732	13	34
G46150016733	13	35
G46150016734	13	36
G46150016735	13	37
G46150016736	13	38
G46150016737	13	39
G46150016738	13	40
G46150016739	13	41
G46150016740	13	42
G46150016741	13	43
G46150016742	13	52
G46150016743	13	53
G46150016744	13	54
G46150016745	13	55
G46150016747	13	57
G46150016748	13	58
G46150016749	13	62
G46150016750	13	64
G46150016751	13	47
G46150016752	13	48
G46150016753	13	49
G46150016754	13	50
G46150016755	13	51
G46150016756	13	44
G46150016757	13	45
G46150016758	13	46
G46150020000	10	1
G46172105000	11	36
		44
G46376512000	10	2
G46462076010	11	8
G46492100000	11	29
G46496040600	11	37
G46496130000	11	47
G46501230000	10	17
G46666132000	11	48
G46796230010	10	3
G46886030000	10	4
G47022200010	11	42
G47082200000	10	32

MODEL : T6350(
PC NO : 0CNP3-G66000

PARTS No. INDEX

PARTS No.	Fig.	Ref.No.
G47212370020	11	25
G47276030000	12	30
G47876410000	10	42
G48501081000	10	7

PARTS No.	Fig.	Ref.No.
-----------	------	---------

PARTS No.	Fig.	Ref.No.
-----------	------	---------

PARTS No.	Fig.	Ref.No.
-----------	------	---------



YANMAR CO.,LTD.